

Section 4:

Plumbing 601-612

1

Drinking Fountains



2

211.2 Minimum Number

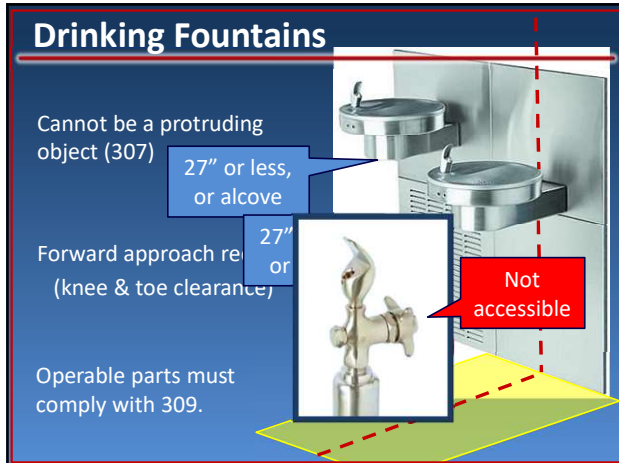
Where drinking fountains are provided, there must be no fewer than two...

- 50% must be an **Accessible Unit** (602.1 - 602.6)
- 50% must be a **Standing Persons Unit** (602.7).



ALL drinking fountains provided must be either an accessible or standing persons unit.

3



4



5



6

Alternate Codes

Plumbing and building codes (not TDLR) typically determine if and when toilet or bathing rooms must be provided, as well as designating the number of fixtures required.



7

TAS Plumbing Handout

213.3 Plumbing Fixtures and Accessories		
	Scoping	Technical
Toilet Compartments	213.3.1	604.8.1/ 604.8.2 / 604.9
Water Closets	213.3.2	604
Urinals	213.3.3	605
Lavatories	213.3.4	606
Mirrors	213.3.5	603.3
Bathing Facilities	213.3.6	607 and 608
Coat Hooks & Shelves	213.3.7	603.4 and 604.9.3

8

213 Plumbing Fixtures and Accessories

- When provided, **each** toilet room must comply with TAS 603. (213.2)
- Where toilet compartments are provided, **at least one** must be accessible. (213.3.1)
- Where water closets are provided, **at least one** must be accessible. (213.3.2)
- When there are 6 or more toilet compartments, or combo of toilets and urinals, **at least one** ambulatory compartment is required. (213.3.1)

9

213.2 Exception 1: Alterations

Where it is **technically infeasible*** in an alteration, altering an existing toilet or bathing rooms is not required if an accessible unisex toilet room or bathing room is provided and located:

- On the same floor and
- In the same area

**approved variance required*

10

213.2 Exception 3 Multiple Single-User Portable

Where multiple single-user portable toilet or bathing units are clustered at a single location, no more than 5% of the units at each cluster are required to comply.

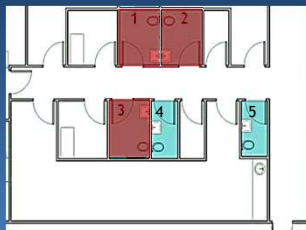


11

213.2 Exc 4: Multiple Single-User

Where multiple single-user toilet rooms* are clustered at a single location:

50% of toilet rooms for each use (i.e. men, women) at each cluster are required to comply with 603.



**Does not apply to clustered bathing rooms (except portable).*

12

Example

Although these toilet rooms are clustered, they serve different users.

TAS 213.2 Ex 4 does not apply. All 3 must be accessible.



13

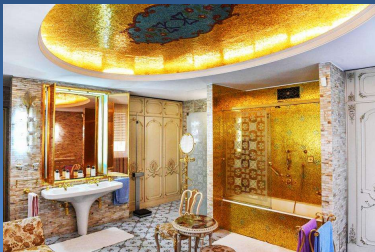
Private Toilet /Bathing Rooms

“Private” toilet or bathing rooms are:

- For a single occupant
- Accessed only through a private office
- Not for common or public use

15

Based on TAS 213.2 and TAS 213.3, private toilet and bathing rooms **must comply with TAS 603** and all other applicable provisions of TAS **at the initial time of construction** except when using specific Exceptions.



17

Exceptions for Private Toilet /Bathing

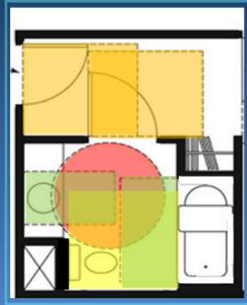
- Door Swing - 603.2.3 Exception 1
- Seats - 604.4 Exception 1
- Grab Bars 604.5 Exception 1
- Clear Floor Space at Lavatories - 606.2 Exception 2
- Height of Lavatory - 606.3 Exception 1
- Bathtub Grab Bars - 607.4 Exception 1
- Shower Grab Bars - 608.3 Exception 1

18

Even with the Exceptions,
private toilet and bathing
rooms must have:

- A turning space
- Clearances at fixtures
- Door maneuvering clearance

...at the initial time of
construction.



19

TM 2013-19

Technical Memorandum 2012 TAS 2013-19
Private Toilet and Bathing Rooms
Effective Date: October 3, 2013
2012 TAS Reference: 213.2 and 213.3

A toilet or bathing room is a single occupied room used only through a private office and not for common use or public use shall be considered a "private" toilet or bathing room.

Based on TAS 213.2 and TAS 213.3, private toilet and bathing rooms and the plumbing fixtures and accessories provided in these rooms shall comply with TAS 603 and all other applicable provisions of TAS at the initial time of construction except to the extent allowed by the following TAS Exceptions:

Toilet and Bathing Rooms
603.2.3, Exception 1: Door Swing.

Water Closets
604.4, Exception 1: Seats.
604.5, Exception 1: Grab Bars.

Lavatories and Sinks
606.2, Exception 2: Clear Floor Space.
606.3, Exception 1: Height.

Bathtubs
607.4, Exception 1: Grab Bars.

Shower Compartments
608.3, Exception 1: Grab Bars.

This clarification does not constitute a substantive change to the compliance requirements of TAS 213.2 and 213.3.

TM 2013-19 was
issued in June 2013
to clarify 213.2 and
213.3 in Private Toilet
and Bathing Rooms.

20

Technical Requirements common to all Toilet Rooms & Stalls



22

604.1 Handout

Your packet includes a handout specifying the technical standards applicable to Water Closets.

604.1 General Water Closets

Water Closets shall comply with:

- 604.2 Location
- 604.3 Clearance
- 604.4 Seats
- 604.5 Grab Bars
- 604.6 Flush Controls
- 604.7 Dispensers
- 604.8 Toilet Compartments

23

604.1 General Exception

Water closets and toilet compartments for children's use are **permitted** to comply with 604.9.

Adult heights are required if the **option** to comply with 604.9 is not exercised.

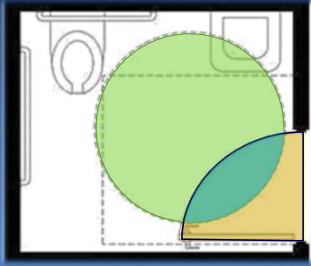


24

603.2.1 Turning Space Toilet and Bathing Rooms

Turning space must be provided **within the room***.

Doors may swing into the turning space.



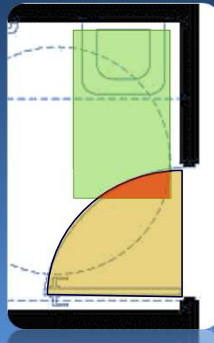
**This prohibits the only turning space from being located in the toilet compartment.*

25

603.2.3 Door Swing Toilet and Bathing Rooms

Doors cannot swing into the Clear Floor Space or clearance required for any fixture.

Unless...



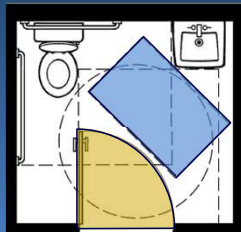
26

603.2.3 Door Swing Exception 2

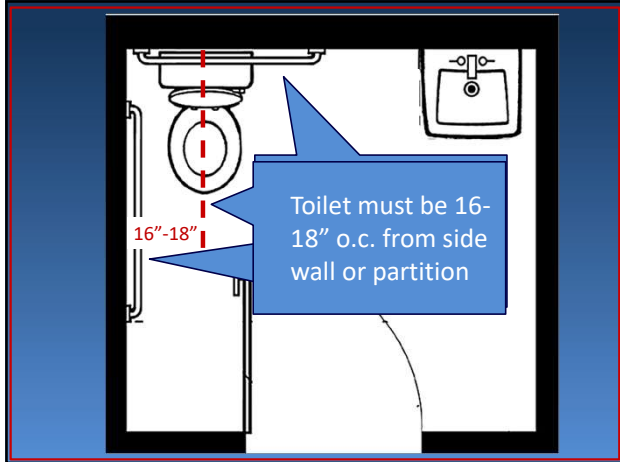
It is a toilet or bathing room for individual use

AND

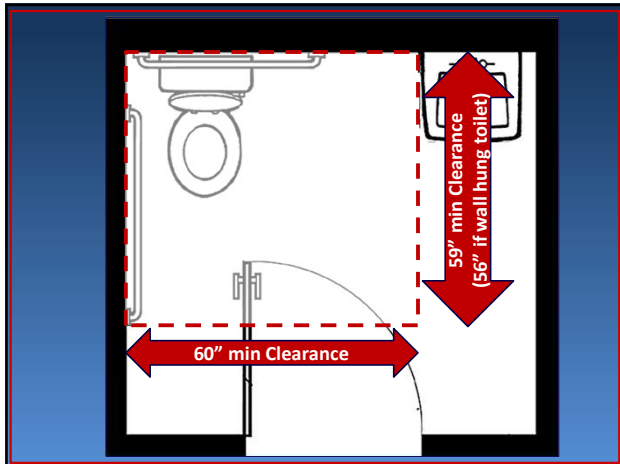
Clear Floor Space (30" x 48" min.) is provided beyond the arc of the door



27



28



30

604.3.2 Overlap

The required clearance around the water closet is permitted to overlap the water closet and associated:

- Grab bars
- Dispensers
- Sanitary napkin disposal units
- Coat hooks
- Shelves

31

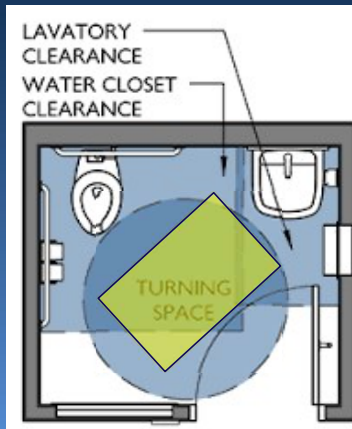
604.3.2 Overlap

No other fixtures or obstructions can be located within required minimum clearance for the accessible water closet.



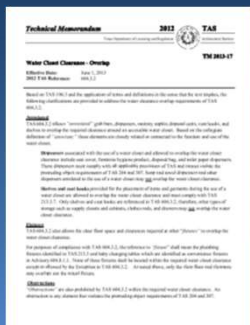
32

Clearances around water closets may overlap other clearances.



33

TM 2013-17



TM 2013-17 was issued in June 2013 to clarify 604.3.2 and required clearances in Water Closets.

34

604.4 Seats

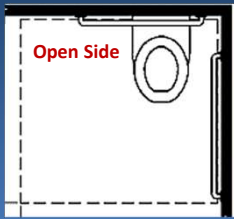
- Seat height - 17"-19" a.f.f. to the top of the seat
- Seats shall **not be sprung** to return to a lifted position.



Seat risers are permitted.

35

604.6 Flush Controls

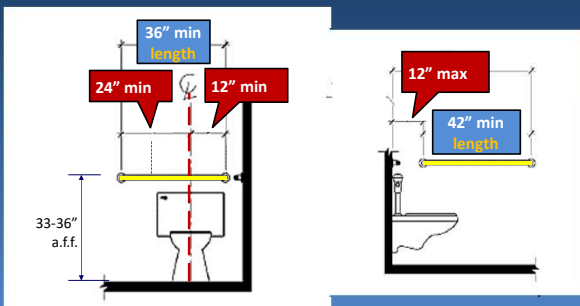


Flush controls must be located on the open side of the water closet (except in ambulatory accessible compartments)

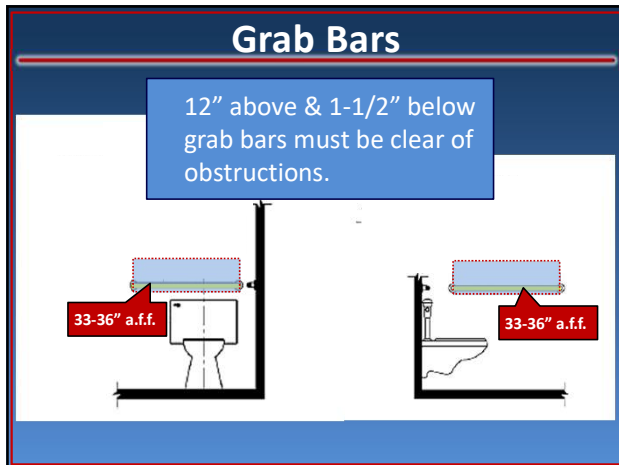


36

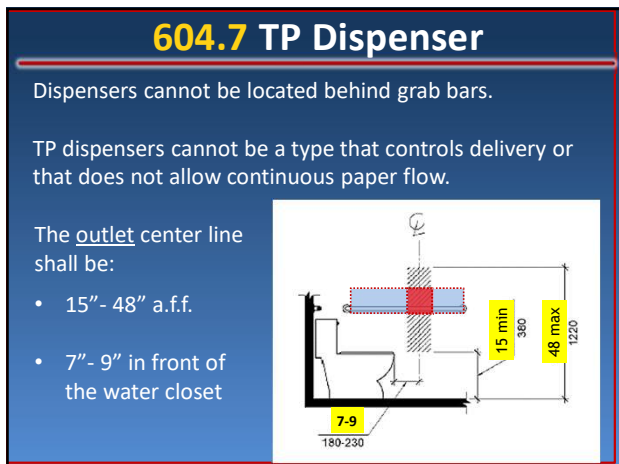
Grab Bars



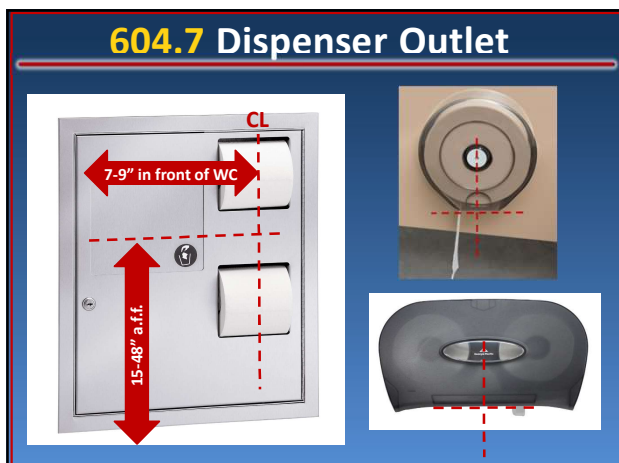
38



39



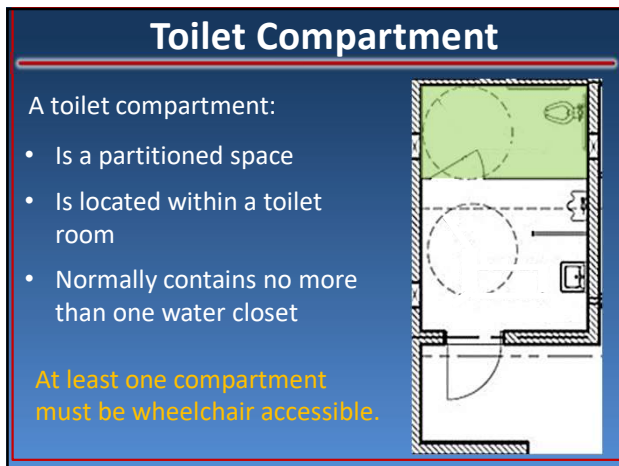
42



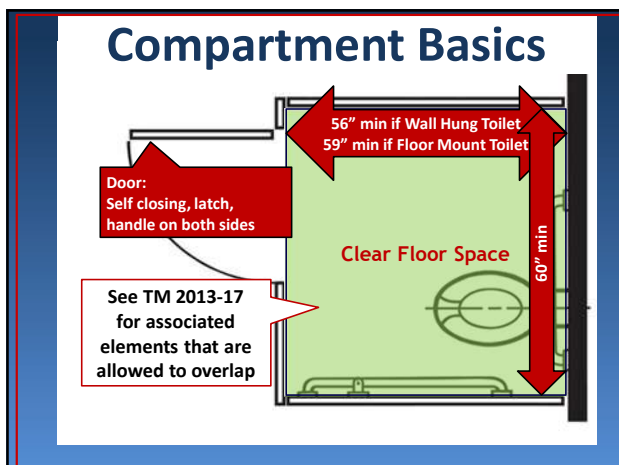
43



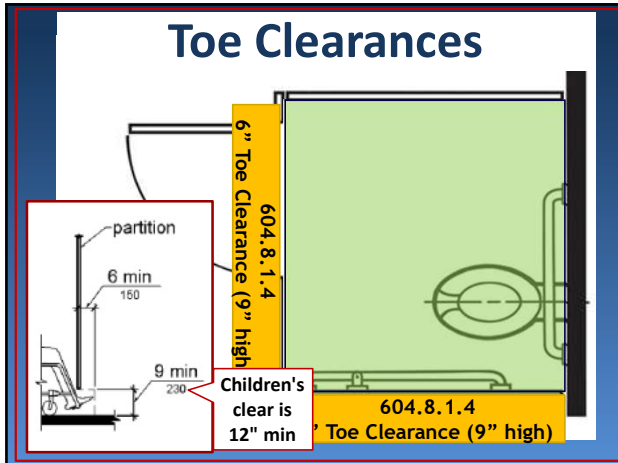
44



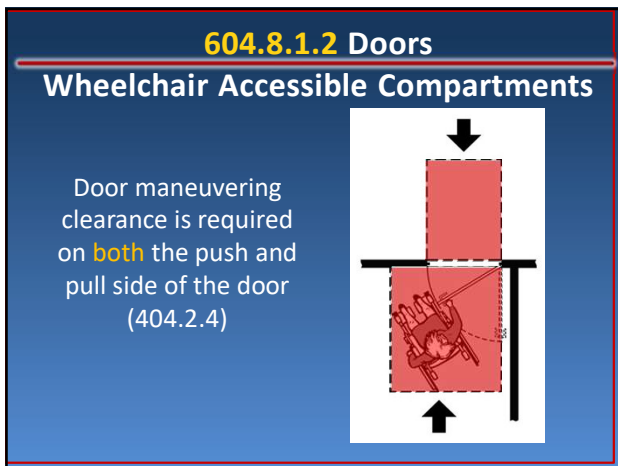
45



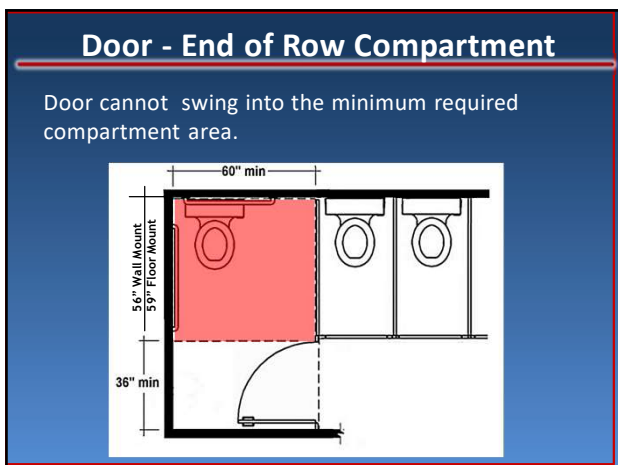
47



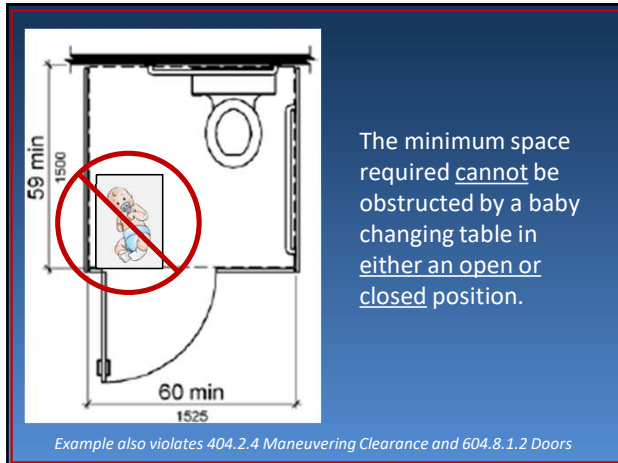
48



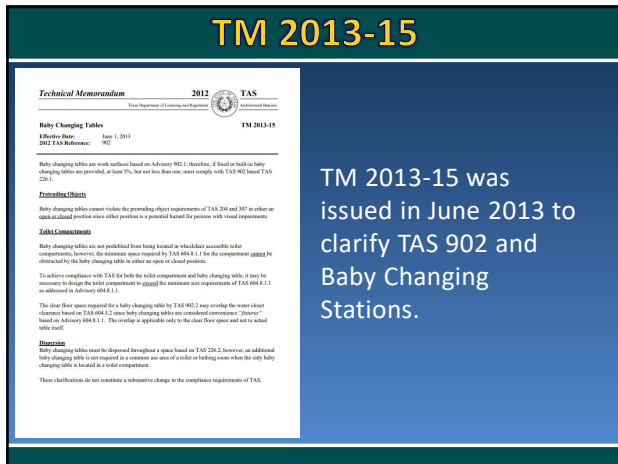
49



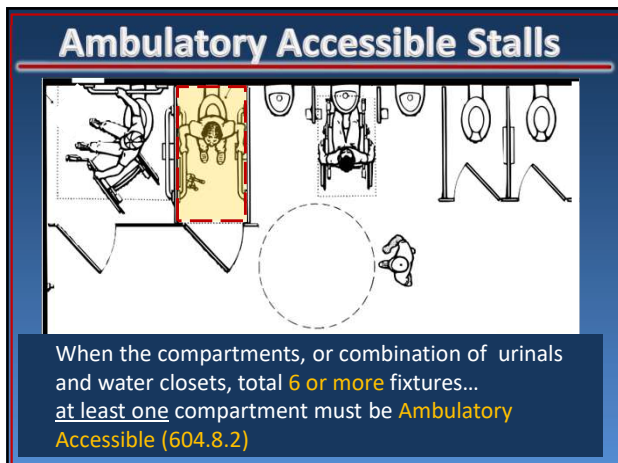
50



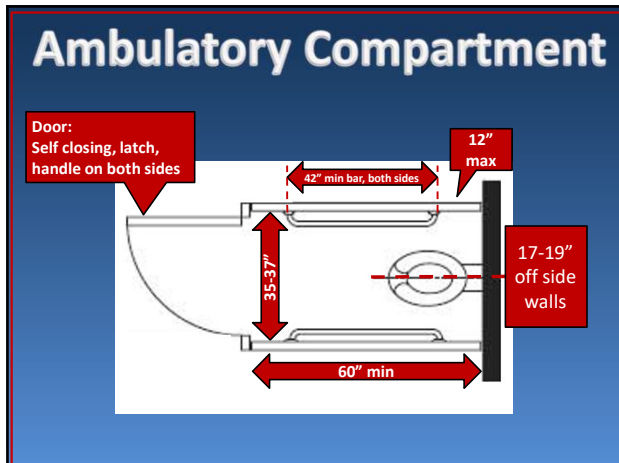
51



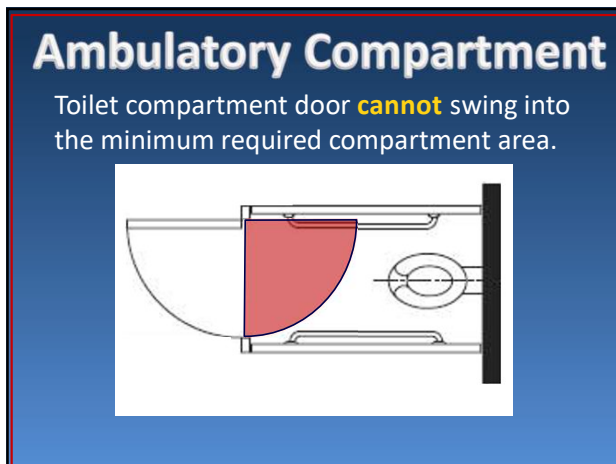
52



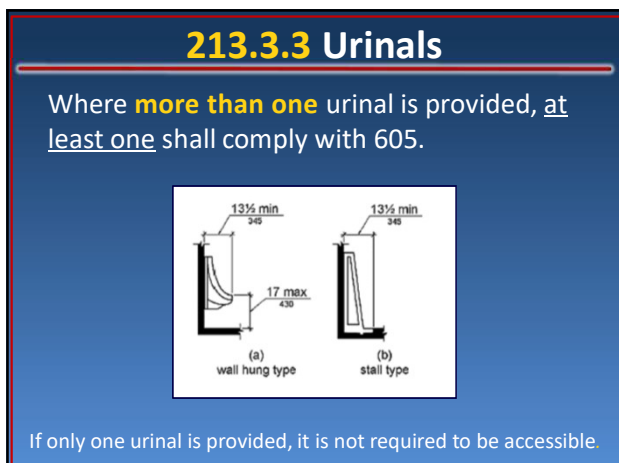
53



54



55



56

605.3 Clear Floor Space

A clear floor or ground space complying with 305 positioned for **forward approach** shall be provided.

(not req'd to be centered).



57

Lavatories and Sinks



59

213.3.4 Lavatories

Where lavatories are provided, at least one:

- Shall comply with 606
- Shall not be located in a toilet compartment*

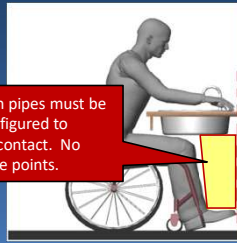
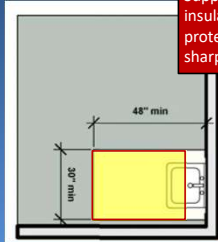


60

606.2 Sink Clear Floor Space

Forward approach

A clear floor space complying with 305



Knee & toe clearance complying with 306

62

Sink Clearances

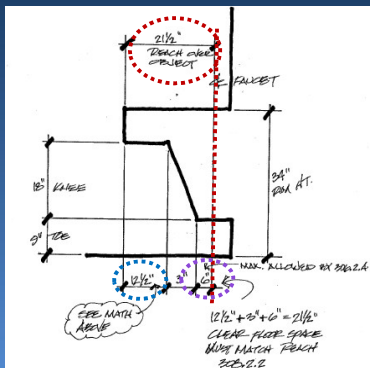
TAS 308.2.2 - Where the high forward reach is over an obstruction, the clear floor space shall extend beneath the element for a distance **not less than the required reach depth over the obstruction.**

AND

305.4 - Knee and toe clearance may be used as part of the clear floor space.

63

21-1/2" Reach Scenario

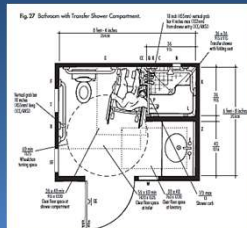


Controls may not be any further away than the most forward point of toe clearance.

Toe clearance is 6" deep max.

With 21-1/2" reach, knee depth = 12-1/2"

64



607.7 Bathtub Enclosures

Enclosures for bathtubs and showers shall not:

- Obstruct controls, faucets, shower and spray units
- Obstruct transfer from wheelchairs onto bathtub seats or into bathtubs
- Have tracks installed on the rim of the open face of the bathtub.

69

Tubs

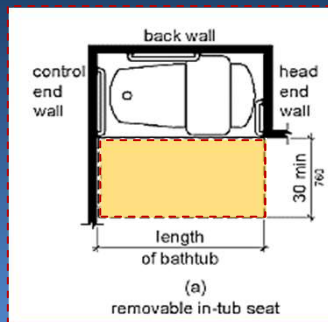


70

Bathtub Clearances 607.2

Clearances must:

- Extend the length of the bathtub
- Be 30" wide min.

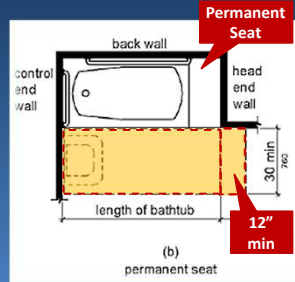


71

Bathtub Clearances 607.2

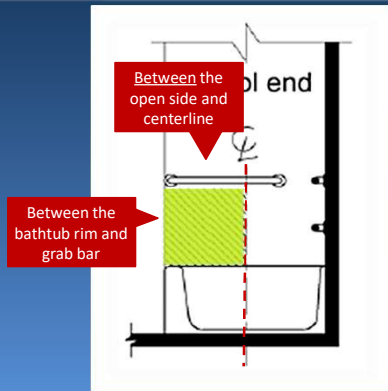
Where a **permanent seat** is provided...

The clearance must extend **12" minimum** beyond the wall at the **head end** of the bathtub.



72

Bathtub Control Location 607.5



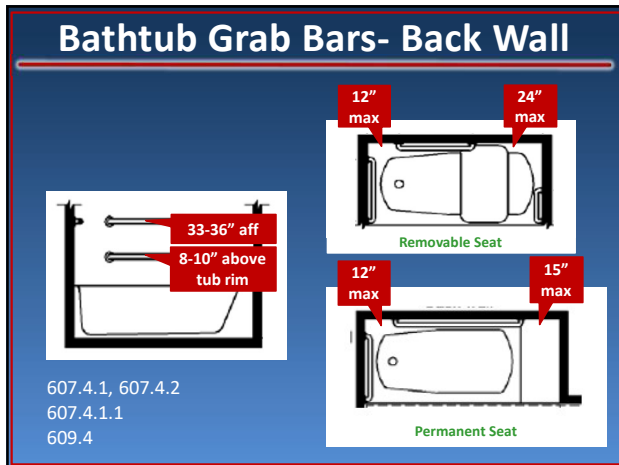
74

Accessible bathtubs must have either **removable** or **permanent** in-tub seats.

Removable bathtub seats must be capable of secure placement (610.2).



75



76



79

Showers **608.2**

Shower compartments must be one of **3 types**:

1. Transfer (608.2.1)
2. Standard Roll-In (608.2.2)
3. Alternate Roll-In Shower (608.2.3)

Any one of these are allowed unless a type is specified.

80

82

83

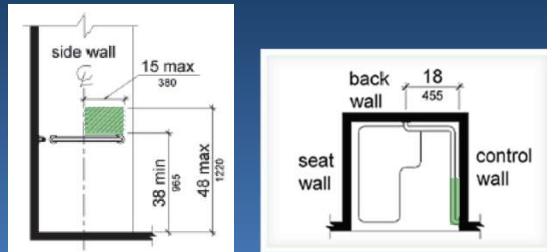
23

Shower Controls & Grab Bars

The location of the shower controls and grab bars depend on the type of shower, and the presence or absence of a seat...

86

608.5.1 Transfer Type Shower

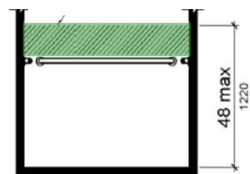


Controls on side wall opposite the seat

87

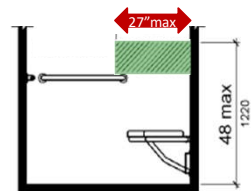
608.5.2 Standard Roll-In Shower

Without Seat



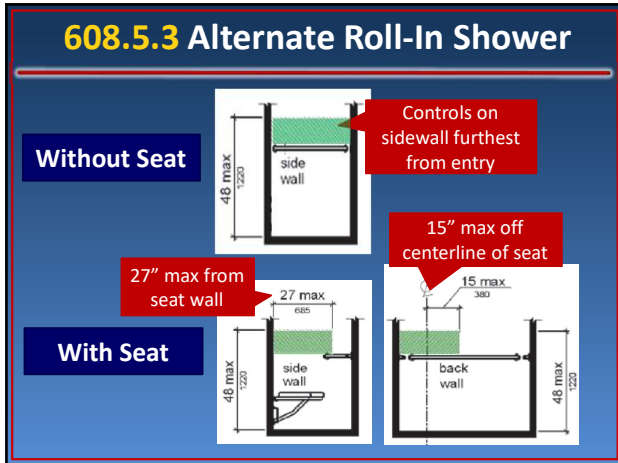
Controls on any wall above grab bar

With Seat



Controls on back wall adjacent to seat

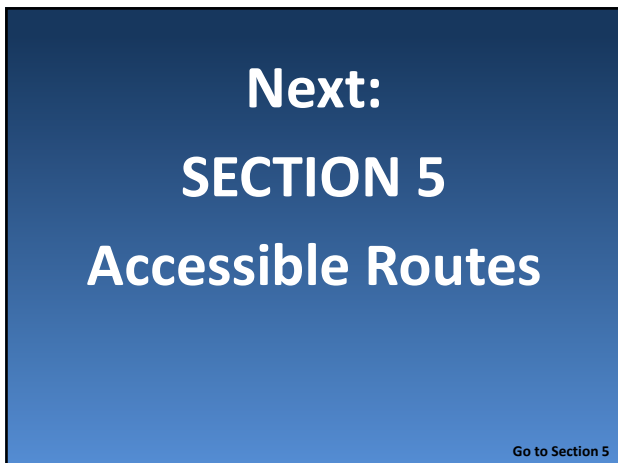
88



89



90



99
