

Section 5: Accessible Routes & Curbs

1

206.2.1 Site Arrival Points

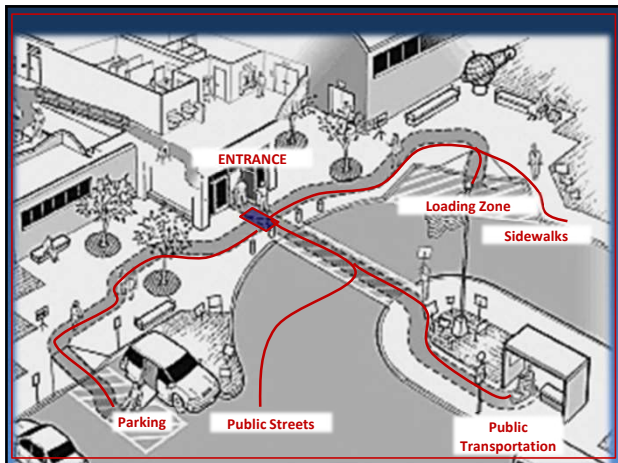
At least one accessible route must be provided within the site from...

- Accessible parking spaces
- Accessible passenger loading zones
- Public streets and sidewalks
- Public transportation stops



... to the accessible building or facility entrance they serve.

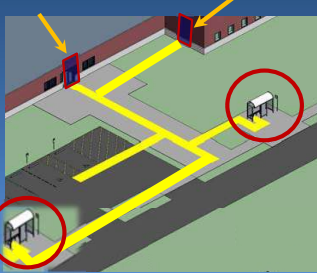
2



3

206.2.1 Advisory

Where two or more similar site arrival points serve the same accessible entrance or entrances, both must be on accessible routes.



The accessible routes must serve all of the accessible entrances on site.

4

106.5.75 Vehicular Way

“A route provided for vehicular traffic, such as in a street, driveway, or parking facility.”



5

A vehicular way may be used as an accessible route as long as it meets the requirements for slope, changes in level, etc.



6

206.2.1 Site Arrival Points- Ex 2

An accessible route is not required between site arrival points and the building entrance if the only means of access between them is a **vehicular way not providing pedestrian access**.*

**Applicable when there is no public sidewalk.*



7

206.2.2 Within A Site Accessible (Connecting) Routes

At least one accessible route shall connect accessible:

- buildings
- elements
- facilities
- spaces

...that are **on the same site**.



8

206.2.2 Exception 1: Within A Site (Connecting Routes)



Example: Self-Storage facility

9

Advisory 206.2.2 Within A Site Areas of Sport Activity

An accessible route is required to connect to the boundary of each area of sport activity.

Examples of areas of sport activity include:

- soccer fields
- basketball courts
- baseball fields
- running tracks
- skating rinks
- the area surrounding a piece of gymnastic equipment



10

206.2.3 Multi-Story Buildings

An accessible route is required to connect each story and mezzanine unless it meets one of seven exceptions (with conditions).

Exceptions include:

- <3000 sf per story OR <three stories
- 5 or fewer occupant load on one of two stories
- Detention and correctional facilities
- Residential dwelling units
- Multi-story transient lodging
- Air traffic control towers
- Historic buildings or facilities permitted by 202.5

11

206.2.3 Residential Dwelling Unit- Exemption

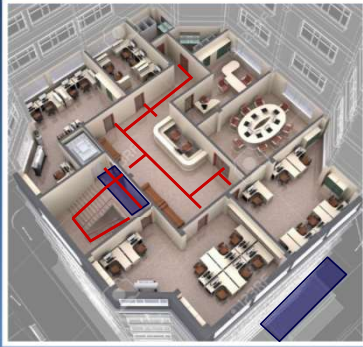


12

206.2.4 Spaces and Elements

At least one accessible route must connect accessible building or facility entrances with all accessible spaces and elements within the building or facility...

...unless exempted by 206.2.3 Ex 1 -7.



13

206.2.4 Spaces and Elements Exceptions (w/conditions)

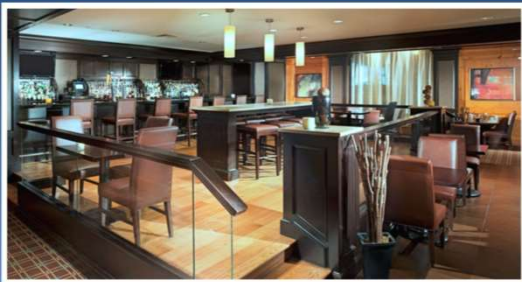
1. Raised courtroom stations
2. Assembly areas with fixed seating
3. Some mezzanines



14

206.2.5 Restaurants & Cafeterias

In restaurants and cafeterias, an accessible route must be provided to all dining areas, including raised or sunken dining areas, and outdoor dining areas.



15

206.2.6 Performance Areas



16

206.2.7 Press Boxes

Press boxes in assembly areas shall be on an accessible route.

Exceptions:

1. Press boxes in bleachers with an aggregate of 500 sf max.
2. Free standing press boxes at least 12' above grade with aggregate 500 sf max.



17

206.2.8 Employee Work Areas

Common use circulation paths within employee work areas shall comply with 402 Accessible Routes.

Employee work areas are required only to have a circulation path, approach, entry, and exit.

Required to comply with 206.2.8.
What else?



18

206.2.9.1 Load & Unload areas

Amusement Rides

Load and unload areas for amusement rides must be on an accessible route.

Where load and unload areas have more than one loading or unloading position, **at least one** loading and unloading position must be on an accessible route.



19

206.2.10 Recreational Boating Facilities

Boat slips required to comply with 235.2 and boarding piers at boat launch ramps required to comply with 235.3 shall be on an accessible route.



20

206.2.11 Bowling Lanes

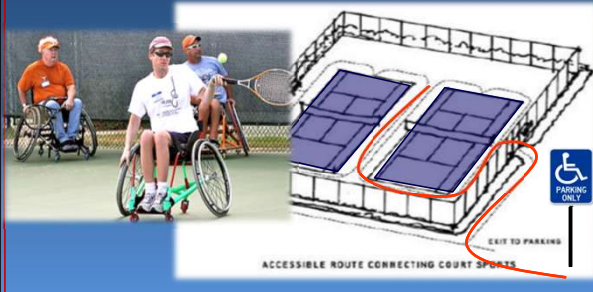
Where bowling lanes are provided, **at least 5%**, but no fewer than **one of each type** of bowling lane, shall be on an accessible route.



21

206.2.12 Court Sports

In court sports, at least one accessible route shall directly connect both sides of the court.



22

206.2.13 Exercise Machines & Equipment

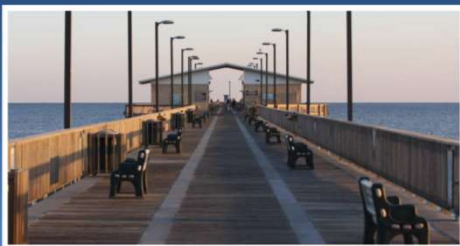
At least **one of each type** of exercise equipment and machine must be on an accessible route.



23

206.2.14 Fishing Piers & Platforms

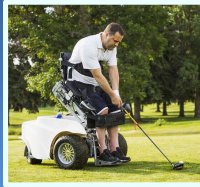
Fishing piers and platforms must be on an accessible route.



24

206.2.15 Golf Facilities

At least one accessible route must connect accessible elements and spaces within the boundary of a golf course. The elements can include golf car rental areas; bag drop areas; weather shelters; toilet rooms; practice greens practice teeing; and teeing stations at driving ranges



25

206.2.16 Miniature Golf Facilities

Holes required to comply with 239.2, including the start of play, shall be on an accessible route.



26

206.2.17 Play Components

- At least one accessible route shall be provided within the play area.
- The accessible route shall connect ground level play components... and elevated play components ... including entry and exit points of the play components.



27

206.3 Location of Accessible Route



Accessible routes shall coincide with or be located in the same area as general circulation paths.

28

Advisory 206.3 Location

Circulation paths, such as vehicular ways designed for pedestrian traffic, walks, and unpaved paths that are designed to be routinely used by pedestrians shall be accessible or have an accessible route nearby.



29

206.3 Location - Interior Routes

Where circulation paths are interior, required accessible routes shall also be interior.

If a new stairway is installed in a tenant space, an accessible route must also be located inside the tenant space, in the same area.



30

Clarification: Accessible Routes

TAS says the location of accessible routes must be located in the same area as stairs or escalators.

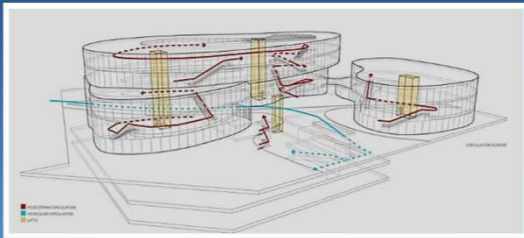
Same area means not in a different section of space within a building.

For example, if a new circulation path is constructed in a tenant space, an accessible route shall also be located in the tenant space.

31

SUMMARY - Accessible routes are required:

1. From the ways you arrive at the site to all the elements on the site.
2. From all spaces and elements to one another.
3. From the entrances to all of the spaces & elements inside.



32



Compliant?

33

Accessible Routes - Technical



34

402.2 Components

All components of an accessible route must comply, including:

- Walking Surfaces
- Ramps
- Curb Ramps
- Vertical Access
- Doors & Entrances



35

403 Walking Surfaces

403.2 floor or ground surfaces comply with 302

- Firm
- Stable
- Slip resistant
- Meet carpet and opening requirements

403.3 slope maximum run 5% and cross 2%

403.4 changes in level comply with 303

- No more than ¼" unless beveled at 50%
- No more than ½" (unless ramped)

36

403.5.1 Clear Width

The clear width of walking surfaces must be 36" minimum... except as provided in 403.5.2 (clear width at turn).

Some Exceptions:

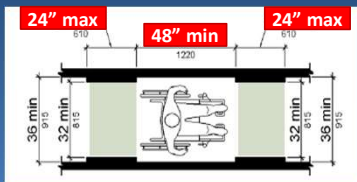
- 60" clear width required for accessible routes connecting ground level play components
- 32" clear width allowed for doorways.



37

403.5.1 Clear Width

The clear width is permitted to be reduced to 32" for a max length of 24" provided that...



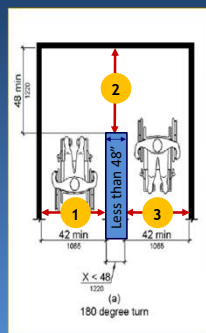
...the sections of reduced width are separated by sections 48" long min and 36" wide min.

38

403.5.2 Clear Width at Turn

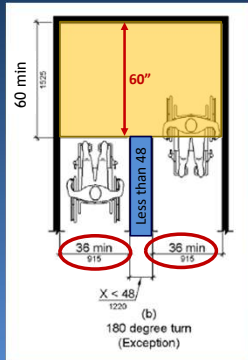
Where the accessible route makes a **180°** turn around an element which is less than 48" wide, clear width shall be:

- 1 42" min. approaching the turn
- 2 48" min. at the turn
- 3 42" min. leaving the turn



39

403.5.2 Clear Width at Turn

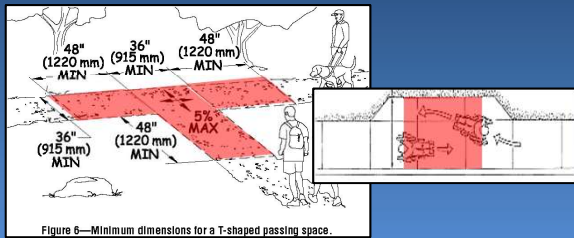


Where the clear width at the turn is **60" min**, compliance with 403.5.2 (42") is not required.

40

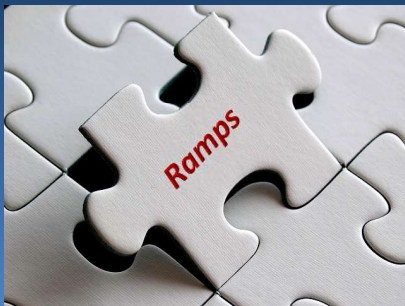
403.5.3 Passing Spaces

An accessible route with a clear width less than 60" must provide passing spaces at intervals of 200' maximum.

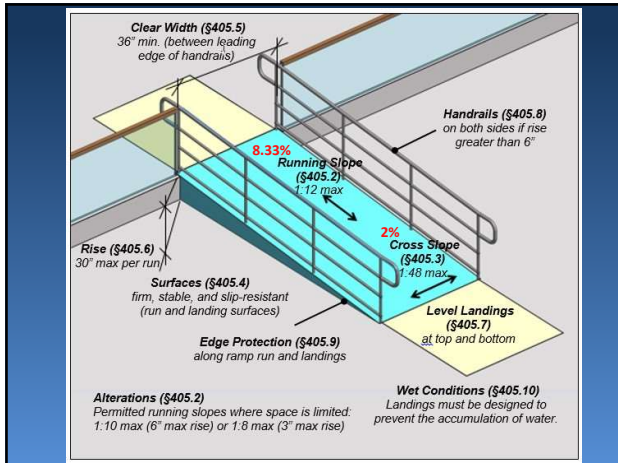


41

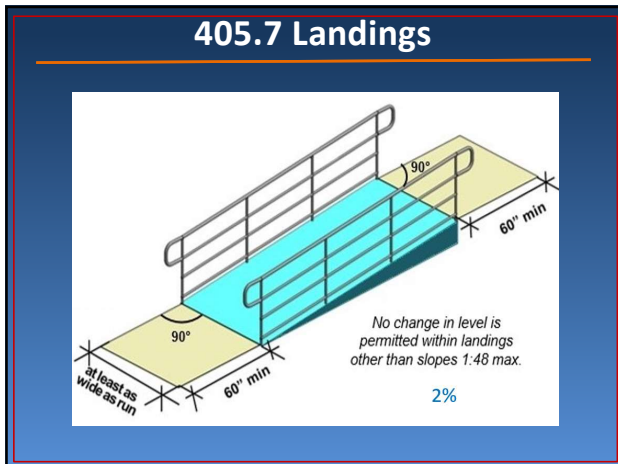
Section 405



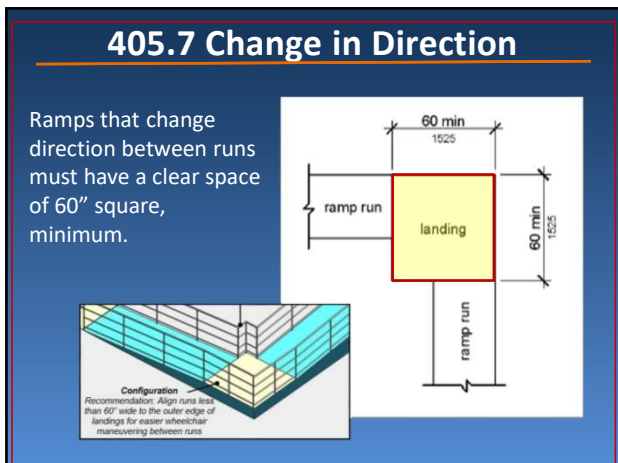
42



43



44



45

405.7.5 Example: Doorways

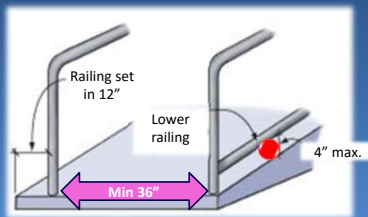


46

405.9 Handrails

When a ramp rises more than 6", there must be edge protection on each side of the **ramps runs** and **landings**.

405.9.1
Extended
Floor or
Ground
Surface



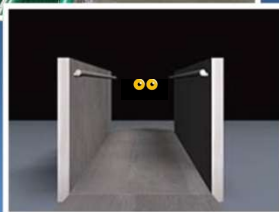
405.9.2
Curb or
Barrier

47

405.9 Edge Protection



Edge protection
can include walls
or curbs at least
4" high.

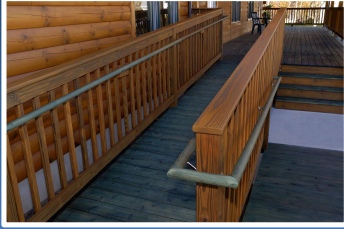


48

505 Handrails

505.2 Handrails shall be provided on both sides of stairs and ramps.

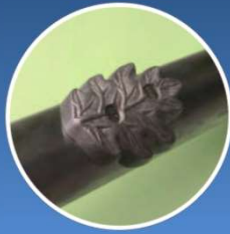
505.3 Handrails must be continuous within the full length of each stair flight or ramp run.



49

505.6-9 Handrail Surfaces

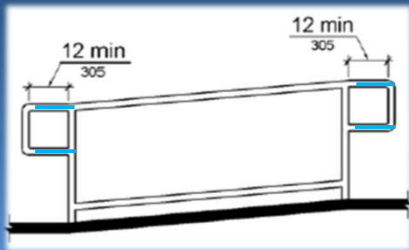
- No obstructions along tops and sides. Restricted 20% max on bottom. (505.6)
- Criteria for size and shape of cross section (505.7)
- No sharp or abrasive surfaces on or near handrail (505.5)
- Rail cannot rotate or move in fitting (505.9)



50

505.10.1 Ramp Extensions

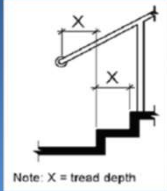
Ramp handrails shall extend horizontally above the landing for **12" min** beyond the top and bottom of ramp runs.



51

505.10.2 Stair Rail Extensions

At the top of a stair flight, handrails shall extend horizontally above the landing for **12" min** beginning directly above the first riser nosing.



At the bottom, handrails shall extend at the slope of the stair flight for a horizontal distance at least **equal to one tread depth** beyond the last riser nosing.

Note: X = tread depth

52

505.10.1 & 2 Extensions

Extensions must return to a wall, guard, or the landing surface, or shall be continuous to the handrail of an adjacent ramp/stair run.



53

505.10 Handrail Extensions

Handrail gripping surfaces must extend beyond and in the same direction of stair flights and ramp runs.



54

505.10 Exception 3

In **alterations**, full extensions of handrails are not required where the extensions would be hazardous due to plan configuration.



55

TAS 403.6 Handrails

Where handrails are **provided** along walking surfaces with running slopes less than 5%, they shall comply with 505.



56

Advisory 403.6 Handrails Elevator Cabs and Platform Lifts



Handrails provided in elevator cabs and platform lifts are not required to comply with the requirements for handrails on walking surfaces.

57



58



59



60

Section 406

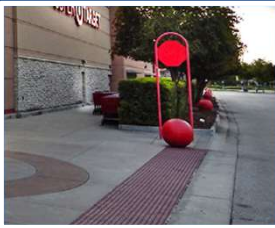


61

Curb Ramp Requirements

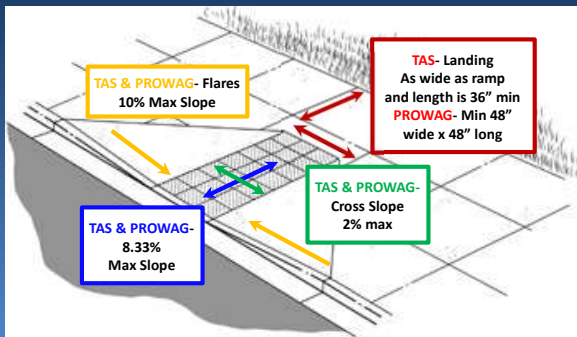
Requirements for curb ramps depend on their location:

- Not in the public right-of-way (ROW)- TAS 406
- In the public right-of-way (ROW)- Rule 68.102



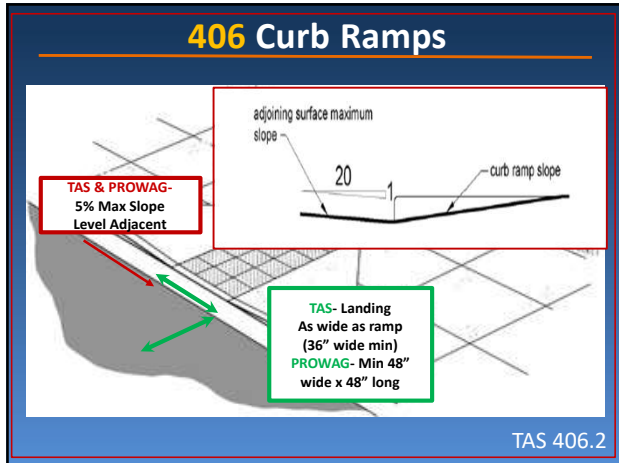
62

Common to **ALL** Curb Ramps



TAS 406

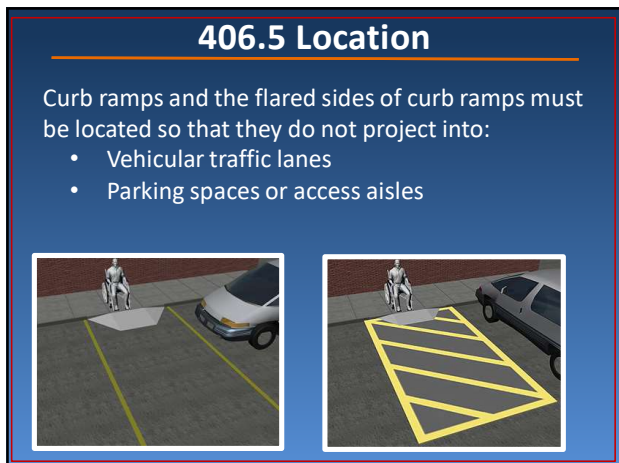
63



64



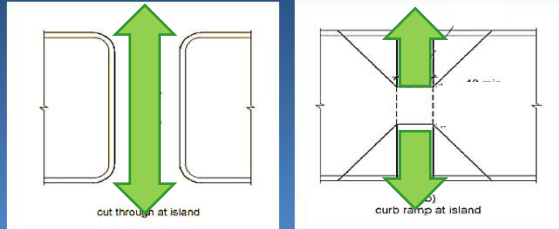
65



66

406.7 Islands

Raised islands in crossings must be cut through level with the street or have curb ramps at both sides.



67

68.102 Public ROW Projects (as of May 15, 2017)

For public right-of-way (ROW) projects, in addition to accepting compliance with applicable TAS requirements, the department will also accept compliance with the [Proposed Accessibility Guidelines for Pedestrian Facilities in the Public Right-of-Way*](#) (PROWAG), or its final adopted guidelines.

*Published by the Architectural and Transportation Compliance Board on July 26, 2011, 36 CFR Part 1190

68

Public ROW Projects

For public right-of-way (ROW) projects let after May 15, 2017, the standards used:

- May be TAS or PROWAG if no federal money is involved.
- Must be PROWAG when federal money is provided.



69

TAS v PROWAG Differences:

RAMPS

TAS 406 - Allows all types of curb ramps, including diagonal curb ramps (406.6).

PROWAG R304.1 - There are two kinds of curb ramps:

- Perpendicular
- Parallel

PROWAG also addresses:

- Combination of perpendicular & parallel ramps
- Blended transitions from old to new work
- Alterations to existing diagonal curb ramps

70

TAS v PROWAG Differences:

LANDINGS

TAS 406.4 - Ramp landings must be the same width as the ramp (36" min) and 36" long minimum

PROWAG R304.3 – Ramp landings must be the same width as the ramp (48" min) and 48" long minimum.

71

TAS v PROWAG Differences:

REFUGE ISLANDS

TAS 406.7 – Landings in refuge islands must be at least 36" wide and 48" long.

PROWAG R302.3.1 – The clear width of the access route in a refuge island must be at least 60" wide. This includes both the ramp and landing.

72

TAS v PROWAG Differences:

DETECTABLE WARNINGS

TAS 705 & 810.5.2 – Only requires detectable warnings at platform boarding areas (bus or train).

PROWAG R208.1 & .2, R305.2 – Lists specific areas where detectable warnings are required, including boarding platforms, commercial driveways with yield or stop controls, street crossings, and at some refuge islands.

73



74



75

Types of Vertical Access



76

Vertical Accessible Route

In multi-story buildings and facilities, vertical access between floors and levels is provided by an:

- Elevator
- Limited-Use Limited-Application Lift (LULA)
- Platform Lift



77

206.2.3 Exception 1

An accessible route is not required to connect stories in private buildings or facilities that are...

- Less than three stories
- or
- Less than 3000 square feet per story



And they must meet conditions.

78

206.2.3 Multi-Story - **Exception 1**

...Provided that the building or facility is not a:

- Shopping center/mall
- Professional office of a health care provider
- Terminal, depot, or other station used for specified public transportation
- Airport terminal
- Other type of facility as determined by the U.S. Attorney General (i.e. federal).

79

Examples of state agencies that regulate professional services and licenses related to physical or mental health:

- Texas Medical Board
- Texas Physician Assistants Board
- Texas State Board of Acupuncture Examiners
- Texas Board of Nursing
- Texas State Board of Examiners of Professional Counselors

80

206.2.3 Multi-Story **Exception 1**

- Not funded by public money
- Less than 3000 sf per story
- Not a shopping mall, office of healthcare provider, or transportation provider

Newby-McMahon Building
701 La Salle
Wichita Falls
4 stories, 18' x 10'



81

206.2.3 Multi-Story - **Exception 2**

Where a two story public building or facility has one story ...

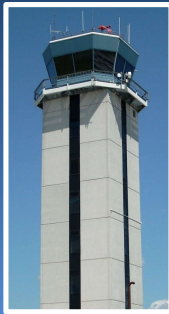
- With an occupant load of 5 or fewer persons
- That does not contain any public use spaces

...that story shall not be required to be connected to the story above or below.

82

206.2.3 Other **Exceptions**

3. Detention & Correctional Facilities
4. Residential Facilities
5. Transient Lodging
6. Air Traffic Control Towers
7. Qualified Historic Buildings or Facilities



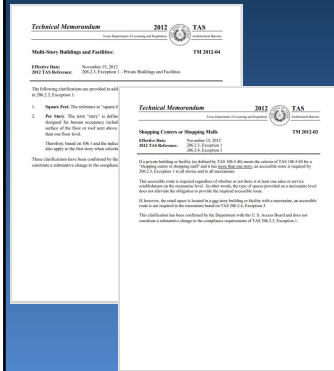
83

206.2.3 Multi-Story - **Advisory**

- The accessible route exemption does not obviate or limit, in any way, the obligation to comply with the **other accessibility requirements**.
- Spaces and elements located on a level not required to be served by an accessible route **must fully comply with TAS otherwise**.

84

TM 2012-03 & -04



TM 2012-03 was issued to clarify the scoping requirements for accessible routes in Shopping Centers or Shopping Malls, and -04 clarifies terms used in 206.2.3 Exception 1.

85

206.6 Elevators

Where multiple elevators are provided, **each** elevator must comply with **407** (landings, call controls, button height, car size, etc.).



86

206.6.1 Existing Elevators

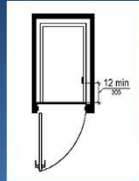


Where elements of **existing elevators** are **altered**, the same element shall also be altered in **all elevators** that are programmed to respond to the same hall call control as the altered elevator and comply with **407**

87

407 Elevators

- 407.1 ASME A17.1
- 407.2 Landing Requirements (controls, signals, signs)
- 407.3 Door Requirements (type, operation, timing, width)
- 407.4 Car Requirements (dimensions, floors, clearances, leveling, lighting, controls, etc ...)



88

206.6 Elevators – Exceptions

Limited-Use Limited-Application elevators (LULA) are permitted in a building or facility that are:

Permitted to use the exceptions to 206.2.3 (multi-story buildings)

or

Permitted by 206.7 to use a platform lift

or

A multi-story residential dwelling unit

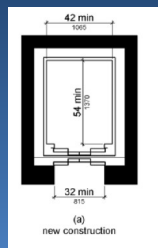


89

408 LULA Elevators

LULAs must comply with:

- 408.1 ASME A17.1
- 408.2 Landing Requirements
- 408.3 Door Requirements
- 408.4 Car Requirements

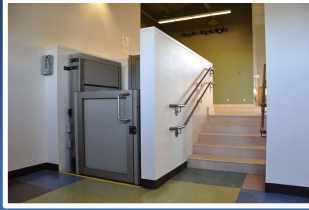


LULA maximum height: 25'

90

206.7 Platform Lifts

- In an **existing building or facility**, platform lifts are permitted as a component of any accessible route.



- Platform lifts are permitted as a component of an accessible route in **new construction** when it is one of the types listed in 206.7.1 – 206.7.10

91

206.7.1-10 New Construction Platform Lifts

When used to provide accessible routes:

- To Performance Areas and Speakers' Platforms
- To comply with the wheelchair space dispersion and line-of-sight requirements
- To incidental spaces which are not public use spaces and which are occupied by five persons maximum
- To Specific Judicial Spaces

92

206.7.1-.10 New Construction Platform Lifts

When used to provide accessible routes:

- Where existing exterior site constraints make use of a ramp or elevator *technically infeasible*
- To connect levels within transient lodging guest rooms and residential dwelling units
- To provide accessible routes to load and unload areas serving amusement rides

93

206.7.1-.10 New Construction Platform Lifts

When used to provide accessible routes:

- To play components or soft contained play structures
- To provide accessible routes to team or player seating areas serving areas of sport activity
- Serving recreational boating facilities and fishing piers and platforms instead of gangways

94

410 Platform Lifts

Must comply with:

- 410.2 Floor surfaces
- 410.3 Clear Floor Space
- 410.4 Clearances
- 410.5 Operable Parts
- 410.6 Doors & Gates
- ASME A18.1

*Portable lifts
are not compliant.*



95

410 Platform Lifts



96

410 Platform Lifts



97

Next

SECTION 6 **Entrances & Doors** **Parking**

[Go to Section 6](#)

98
