

SECTION 6: Entrances & Doors Parking

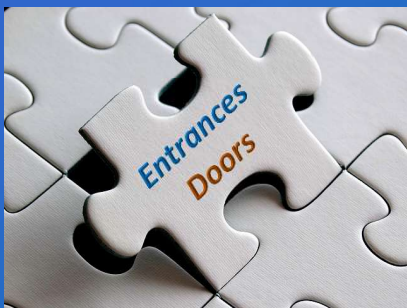
1

Components of Accessible Route



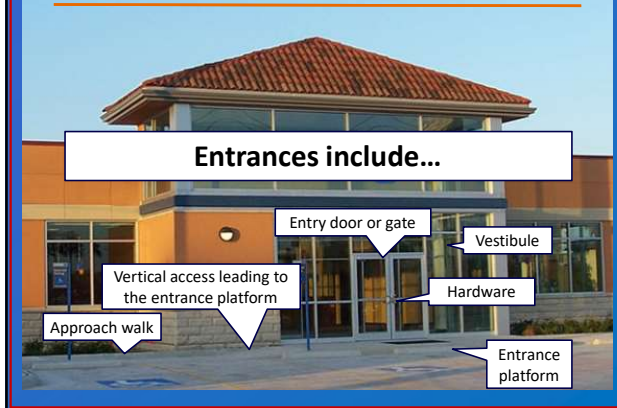
2

Section 206 & 404



3

106.5.29 Entrances



4

206.4 Entrances



Entrance doors, doorways, and gates must comply with the requirements of 404 and must be on an **accessible route** complying with 402.

5

206.5 User Passage



If going into/entering a space is not required for a person to use the space...

...the doors do not provide **user passage** and do not have to comply with 206 & 404.

6

3 Types of Entrances

1. Service Entrance (106.5.59)

An entrance intended primarily for delivery of goods or services.

If a service entrance is the only entrance to a building or to a tenancy in a facility, that entrance has to comply with TAS 404 (per 206.4.8).

7

3 Types of Entrances

2. Restricted Entrance (106.5.55)

An entrance that is made available for common use on a controlled basis but not public use, and that is not a service entrance.

Per 206.4.7, where restricted entrances are provided to a building or facility, at least one restricted entrance to the building or facility must comply with 404.

8

3 Types of Entrances

3. Public Entrances (106.5.49)

An entrance that is not a service entrance or a restricted entrance.

Per 206.4.1, in addition to entrances required to be accessible by 206.4.2 through 206.4.9, at least 60% of all public entrances shall comply with 404.

9

206.4.2-.9 Accessible Entrances

60% of Public Entrances in new construction & in alterations must be accessible **AND** :

- 100% of the entrances providing direct access from parking structures
- At least one direct entrance from a tunnel or walkway
- At least one entrance to each tenancy



10

206.4 Accessible Entrances

60% of Public Entrances **AND**:

- At least one restricted entrance
- At least one service entrance
- At least one primary entrance at a residential dwelling

Transportation Facilities have specific, additional requirements (206.4.4)



11

206.4 Accessible Entrances

Exception:

- Where an alteration includes alterations to an entrance
- And the building or facility has another entrance complying with 404 that is on an accessible route

...The altered entrance is not required to comply with 206.4 unless it is part of the accessible route to an altered primary function area.

12

206.5.1 Entrances

Each entrance to a building or facility required to comply with 206.4 must have **at least one** accessible door, doorway, or gate.



Revolving doors, gates, & turnstiles are not accessible.

13

404.2.2 Double Leaf Doors & Gates

At least one of the active leaves of doorways with two leaves must be compliant.



14

206.5.2 Rooms & Spaces

Within a building or facility, **at least one** door, doorway, or gate serving each accessible room or space shall comply with 404.



15

206.5.3 Transient Lodging

In hotel guest rooms that are not required to be accessible, the entrances, doors, and doorways providing user passage into and within the rooms **must be accessible**.



provided by Leonardo

Does not apply to shower and sauna doors in guest rooms.

16

404.1 General Exception

Doors, doorways, and gates designed to be operated only by security personnel are not required to comply with:

- Hardware (404.2.7)
- Closing speed (404.2.8)
- Opening force (404.2.9)

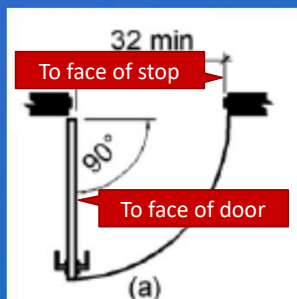


All other requirements apply.

17

404.2.3 Clear Width

Door openings must provide a clear width of **32" minimum** when the door is open to 90°.



When the door opening is more than 24" deep you must provide a clear opening of 36" min.

18

404.2 Maneuvering Clearance

Maneuvering Clearance is the minimum space required by persons using mobility aids to position and maneuver at doors, doorways, and gates.

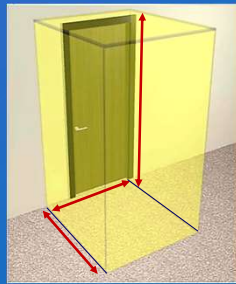


Not just wheelchair users.

19

404.2 Maneuvering Clearances

- Extend the full width of the doorway
- Include the required latch side or hinge side clearance
- Are 80" high (except for the door closers and door stops allowed at 78")
- Are measured from the surface of the wall

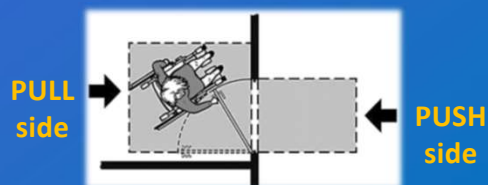


20

Maneuvering

Maneuvering clearance is applicable to both the **push** and **pull** sides of doors.

The size of the maneuvering clearance required depends on the **approach available** at the door.



21

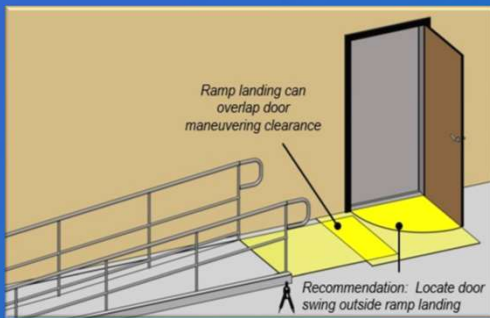


It is **never acceptable** to use knee and toe clearance to satisfy the door maneuvering clearance requirements of TAS 404.2.4.

22

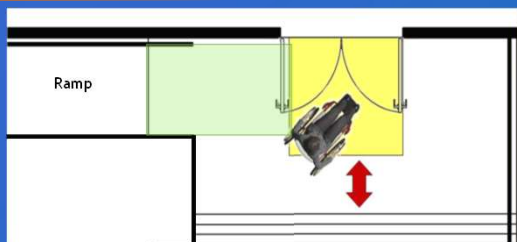
405.7.5 Doorway

Ramp landings can overlap door maneuvering clearances.



23

405.7.5 Example: Doorways



Recommendation: Locate maneuvering clearance away from stair openings and outside door landings to prevent hazardous conditions.

24

404.2.4.4 Floor & Ground Surfaces

Floor or ground surface within required maneuvering clearances shall comply with 302 (Floor or Ground Surfaces).

Changes in level are not permitted.

If provided at doorways, thresholds shall be ½" high maximum.*

**Exception: Existing or altered thresholds ¾" high maximum that have a beveled edge on each side with a slope not steeper than 1:2*

25

EXERCISES

Maneuvering Clearances

Pages 84-86

Table and Figures 404.2.4.1

Maneuvering Clearances at
Manual Swinging Doors and Gates

26

Front Approach, Pull Side

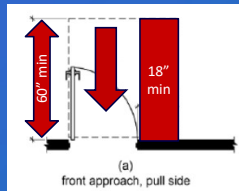
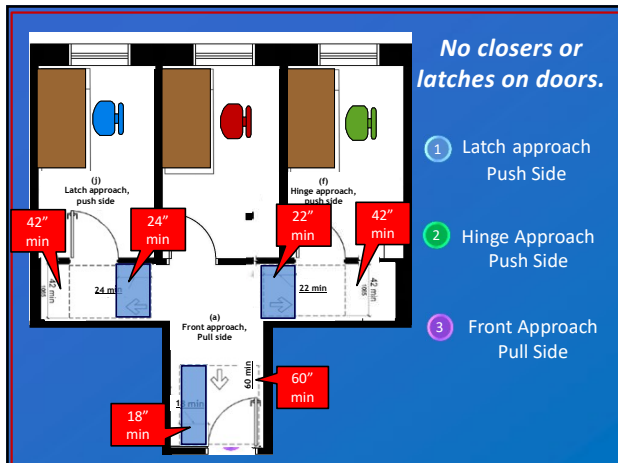


Table 404.2.4.1 Maneuvering Clearances at Manual Swinging Doors and Gates

Type of Use		Minimum Maneuvering Clearance	
Approach Direction	Door or Gate Side	Perpendicular to Doorway	Parallel to Doorway (beyond latch side unless noted)
From front	Pull	60 inches (1525 mm)	18 inches (455 mm)
From front	Push	48 inches (1220 mm)	0 inches (0 mm) ¹

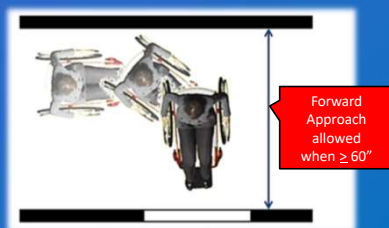
27



28

Approach - Exception

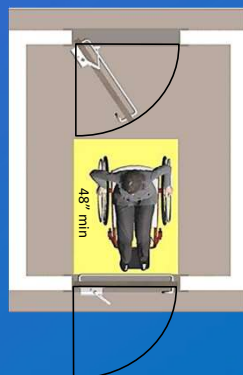
If the approach space is at least 60" deep and unobstructed, a forward approach in lieu of a hinge or latch approach can be provided.



29

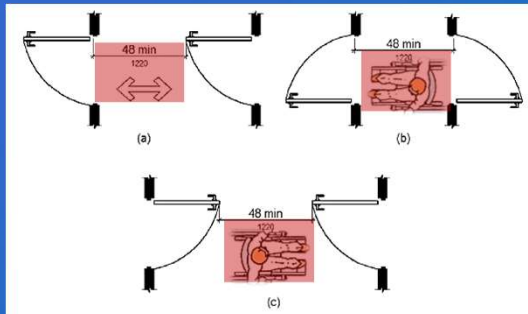
404.2.6 Doors in a Series

The distance between two hinged or pivoted doors or gates in series must be **48" minimum plus the width of doors** or gates swinging into the space.



33

The same 48" requirement is applicable regardless of whether the door swings in the same direction, opposite directions, inward, or outward.



34



Doors with screen doors are not subject to doors in series requirements.

However, each door must still comply with 404.



35

404.3.2 Power-Assisted Doors

Clearances at automatic doors and gates without standby power and serving an accessible means of egress must provide maneuvering clearances.

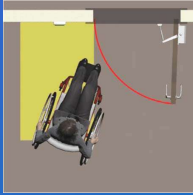
But: If the power assisted /automatic doors and gates **remain open in the power-off condition**, maneuvering clearance is not required.



36

404.3.5 Manual Controls

Manually Operated Controls must comply with the Operable Part requirements of 309.

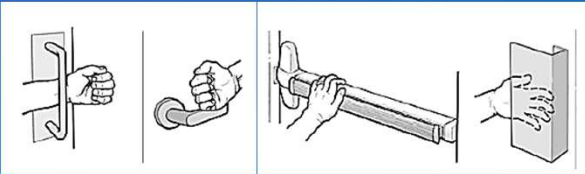


The clear floor space adjacent to manually operated controls must be located beyond the arc of the door swing.

37

404.2.7 Hardware

Handles, pulls, latches, locks, and other operable parts on doors and gates must comply with the operation requirements of 309.4.



38

404.2.9 Opening Force

The force for pushing or pulling open a door or gate (other than a fire door) is 5 pounds max.



Spring Scale



Tension Meter



39

404.2.7 Hardware

Operable parts of handles, pulls, latches, locks such hardware must be 34" min and 48" max above the finish floor or ground.



40

404.2.10 Door & Gate Surfaces

On the push side of doors and gates, a smooth surface (within 1/16") is required to 10" a.f.f. Kick plates within the 10" must be capped.



41

Compliant?



42

Parking and Passenger Loading Zones

43

Examples

Conditions that Affect Mobility

- Conditions requiring the use or assistance of a brace, cane, crutch, prosthetic device, wheelchair, or powered mobility aid
- Arthritic, neurological, or orthopedic conditions that severely limit one's ability to walk
- Respiratory diseases and other conditions which may require the use of portable oxygen
- Cardiac conditions that impose significant functional limitations.

44

208.1 General - Parking Spaces

Where parking spaces are provided, parking spaces shall be provided in accordance with 208.



Includes all parking (employee, visitor, etc.) unless exempted.

45

208.1 General Exception

Parking spaces used exclusively for buses, trucks, other delivery vehicles, law enforcement vehicles, or vehicular impound shall not be required to comply with 208...



...**provided that** lots accessed by the public are provided with a passenger loading zone complying with 503.

46



Exception to 208.1 **would not apply** if the lot is also used for employees (i.e. officers) to park their own vehicles.

47

208.2 Minimum Number

Where more than one **parking facility** is provided on a site, the number of accessible spaces are calculated according to the number of spaces required for each parking facility.



Parking is calculated on a facility-by-facility basis.

48

208.2 Minimum Number



A parking facility can be a single space, a parking lot, a parking floor within a building, or a stand alone parking structure.

49

Table 208.2

Total Number of Parking Spaces Provided in Parking Facility	Minimum Number of Required Accessible Parking Spaces
1 to 25	1
26 to 50	2
51 to 75	3
76 to 100	4
101 to 150	5
151 to 200	6
201 to 300	7
301 to 400	8
401 to 500	9
501 to 1000	2 percent of total
1001 and over	20, plus 1 for each 100, or fraction thereof, over 1000

50

208.2.4 Van Parking Spaces

For every 6, or fraction of 6, parking spaces required to be accessible, at least one shall be a van accessible parking space.



If only one parking space is required by Table 208.2, that space must be van accessible.

51

208.2 Minimum Number

Parking spaces shall be provided in accordance with Table 208.2 except as required for:

- Hospital Outpatient Facilities (208.2.1);
- Rehabilitation Facilities and Outpatient Physical Therapy Facilities (208.2.2); and
- Residential Facilities (208.2.3).

These facilities have their own parking requirements.

52

208.2.1 Hospital Outpatient Facilities



Ten percent (10%) of patient and visitor parking spaces provided to serve hospital outpatient facilities shall comply with 502.

53

Outpatient Facilities

"Outpatient facility" covers facilities or units that are **located in hospitals** and provide treatment **without an overnight stay**. Individual medical facilities are subject to Table 208.2



54

208.2.2 Rehabilitation Facilities and Outpatient Physical Therapy Facilities

Twenty percent (20%) of patient and visitor parking spaces provided to serve:

- **Rehabilitation facilities** specializing in treating conditions that affect mobility
- **Outpatient physical therapy facilities...**

...must comply with 502



55

208.2.3 Residential Facilities Parking

Parking spaces provided to serve residential facilities shall comply with 208.2.3.

Residential Facilities Subject to Compliance

Social Service Establishments

Crew Quarters for Emergency Response Personnel

Graduate Student and Faculty Housing
at Places of Education

56

208.2.3.1 Parking for Residents

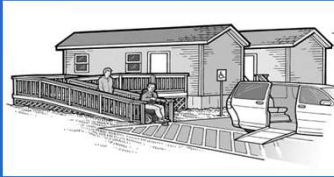
Where parking space is provided for each residential dwelling unit, at least one parking space complying with 502 shall be provided for each residential dwelling unit required to provide mobility features.



57

208.3.2 Residential Facilities

In residential facilities containing residential dwelling units required to provide **mobility features**, parking spaces must be located on the **shortest accessible route** to the entrance of the residential dwelling unit they serve.



58

208.3 Location



Parking spaces complying with 502 that **serve a particular building or facility** must be located on the shortest accessible route from parking to an entrance complying with 206.4.

59

208.3 Location

Parking facilities, including public and pay parking, that do not serve a particular building or facility, must have accessible parking on the **shortest accessible route to an accessible pedestrian entrance** of the parking facility.



60

208.3.1 Location

Where parking spaces serve more than one accessible entrance, the spaces must be **dispersed** and located on the shortest accessible route to the accessible entrance.



Example: Office complex or mall parking

61

208.3 Location - Exception 1

All **van parking spaces** are permitted to be grouped on one level within a multi-story parking facility.



62

208.3 Location - Exception 2

Parking spaces shall be permitted to be located in different parking facilities if **substantially equivalent or greater accessibility** is provided in terms of:

- distance from an accessible entrance
- parking fee
- user convenience

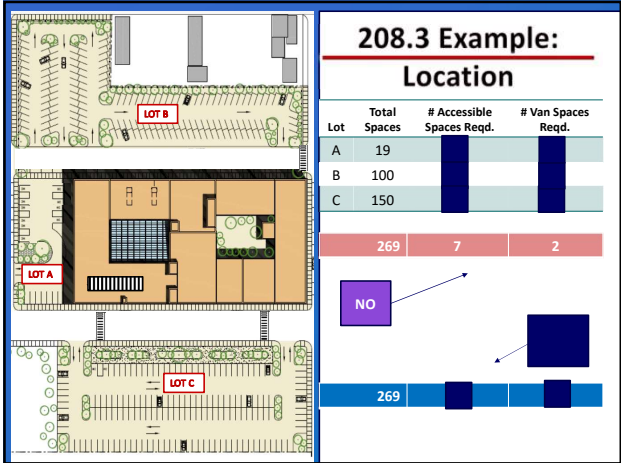


63

Go to Table 208.2 (page 34)

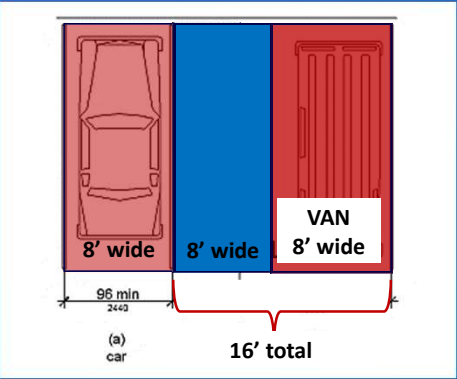
Total Number of Parking Spaces Provided in Parking Facility	Minimum Number of Required Accessible Parking Spaces
1 to 25	1
26 to 50	2
51 to 75	3
76 to 100	4
101 to 150	5
151 to 200	6
201 to 300	7
301 to 400	8
401 to 500	9
501 to 1000	2 percent of total
1001 and over	20, plus 1 for each 100, or fraction thereof, over 1000

64



65

502.2 Vehicular Spaces



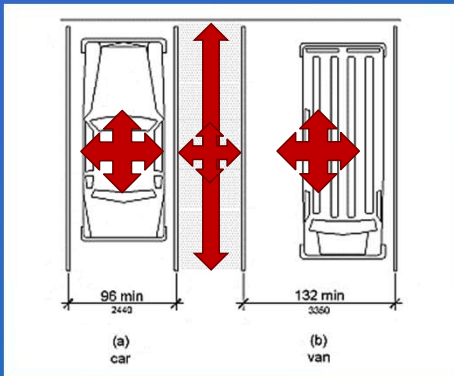
66

Why the extra width for a Van?



67

502.2 Vehicular Spaces



68

502.3.4 Location

- Access aisles shall be **at the same level** as the parking space.
- Access aisles **cannot** overlap the vehicular way.



69



70

502.3 Access Aisles

- Must connect to an accessible route.
- Must be **marked** to define the width and to discourage parking in aisle.



71

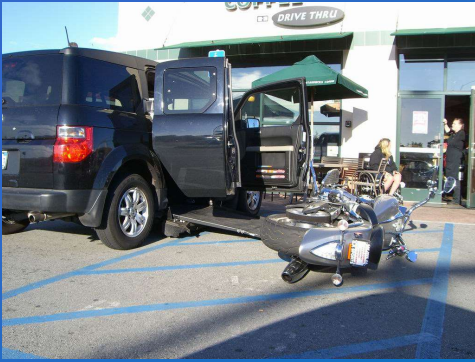
Angled vs. Non-Angled

- Non-angled parking access aisles can be on either side of the space.
- Angled parking access aisles must be on the passenger side of the space.



72

Why Not Park in Access Aisle?



73

502.7 Relationship to Routes

Parking spaces and access aisles must be designed so that cars and vans, when parked, cannot obstruct the required clear width of adjacent accessible routes.

Wheel stops are an effective way to prevent vehicle overhangs into an accessible route.



74



75

502.5 Vertical Clearance

Parking spaces for vans, and access aisles and vehicular routes serving them, shall provide a vertical clearance of 98" minimum.



76

502.6 Identification

Parking space identification signs shall include the International Symbol of Accessibility.



Signs identifying van parking spaces shall contain the designation "van accessible."

77

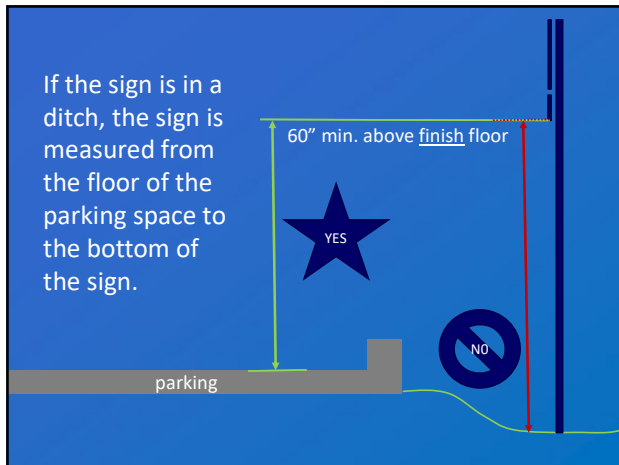
502.6 Identification

Signs shall be 60" minimum above the finish floor or ground surface measured to the bottom of the sign.



If "van accessible" is mounted below the symbol of accessibility, the sign height is measured to the bottom of "van accessible"

78



79



80



81

Rule 68.104

Paved parking spaces must include:

- 1) International Symbol of Accessibility painted in contrasting color of the pavement



82

Rule 68.104

Paved parking spaces must include:

- 2) The words "NO PARKING" painted in the access aisle

- Capital Letters
- height of 12" and stroke width of minimum 2"
- centered within the aisle



83

Rule 68.104

Paved parking spaces must include:

- 3) Signage identifying consequences

- minimum statement of "Violators Subject to Fine and Towing"
- mounted on a pole, post, wall or freestanding board
- mounted no more than 8" below the signage required by TAS 502.6
- mounted so bottom edge of the sign is no lower than 48" and no higher than 80" above the ground

84

What's
wrong with
this parking
scenario?



85

209 Passenger Loading Zones



Types of Passenger Loading Zones that comply with 503

209.2.1 "Where Provided"
Passenger Loading Zones – including
transportation network spaces

209.3 Medical Care and Long-Term
Care Facilities

209.4 Valet Parking

209.5 Mechanical Access Garages

Types of Passenger Loading Zones that comply with 810.2

209.2.2 Bus-Loading Zones

209.2.3 On-Street Bus Stops

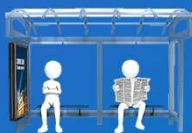
86

209.2.2 Bus Loading Zones

In bus loading zones restricted to use by designated or specified public transportation vehicles, each bus bay, bus stop, or other area designated for lift or ramp deployment must comply with the bus boarding and alighting area requirements of 810.2.



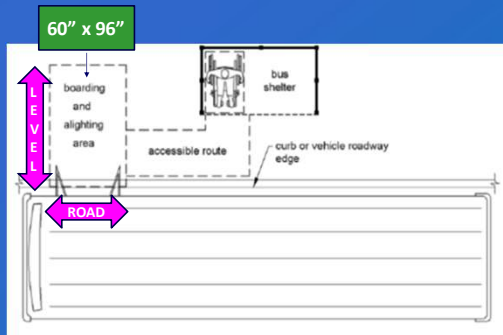
Designated
public transportation



Specified
public transportation

87

810.2 Bus Boarding & Alighting



Bus loading zones and on-street bus stops are subject to compliance with 810.2

88

209.2.1 Passenger Loading Zones

Where loading zones are provided, one accessible passenger loading zone is required for every continuous 100 linear feet of loading zone space.



89

209.3 Medical Care and Long-Term Care Facilities

At least one passenger loading zone shall be provided at an accessible entrance to licensed medical care and licensed long-term care facilities where the period of stay exceeds twenty-four hours.



90

209.5 Mechanical Access Garages

Mechanical access parking garage shall provide at least one passenger loading zone at vehicle drop-off and vehicle pick-up areas.



91

209.5 Mechanical Access Garages



92

209.5 Mechanical Access Garages



No, this one doesn't count as public mechanical access parking.



93

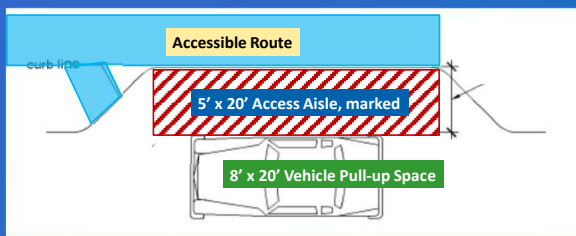
209.4 Valet Parking

Parking facilities that provide valet parking services shall provide at least one passenger loading zone.



94

503 Passenger Loading Zones



95

503.5 Vertical Clearance

Vertical clearance for passenger loading zones must be 114" (9'6") minimum for:

- Vehicle pull-up space
- Access aisle
- Vehicular routes
 - From an entrance
 - To an exit



96

Your Take On It



Required:
5' x 20' marked
Access Aisle

97

Tech Memo 2012-1



TM 2012-01 was issued on March 15, 2012 to address the compliance requirements for electric vehicle charging stations.

98

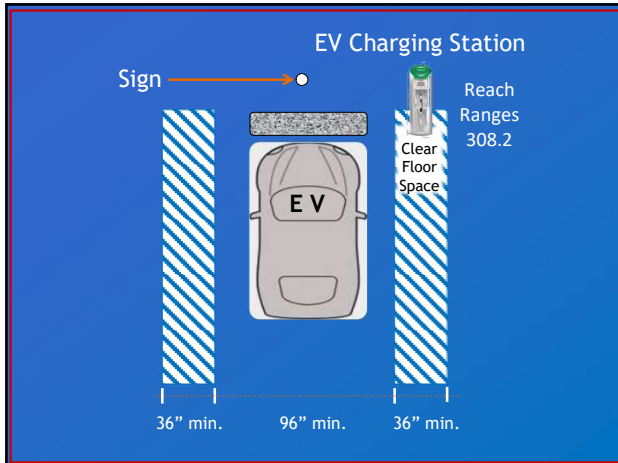
Vehicle Charging Station

If electric charging stations are provided in new or existing ... locations containing parking spaces, **twenty percent (20%)**, but not less than **one of each type** of charging station **in each cluster** on a site shall meet:

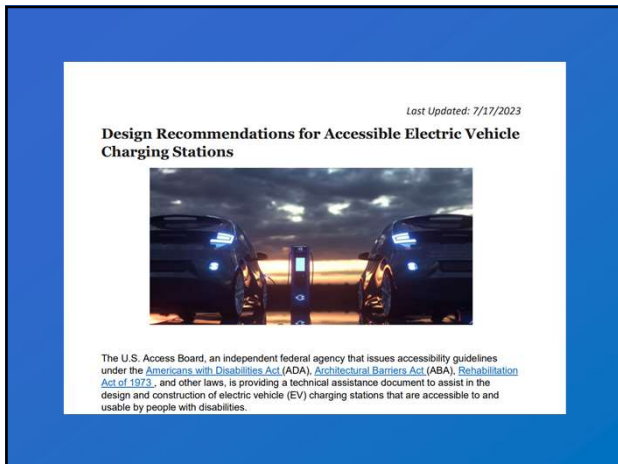
- 216.3, 703.5 Signage
- 308.2 Forward Reach Range
- 309 Operable parts
- 8' wide space with 3' wide aisle
- Marking recommended



99



100



101



102

Next:

SECTION 7

Lodging

Dining

Assembly

Go to Section 7

103
