

## SECTION 7:

### Lodging Dining Assembly

1

---

---

---

---

---

---

---

#### 106.5.71 Transient Lodging

It is "A building or facility containing one or more guest room(s) for sleeping that provides accommodations that are primarily short-term in nature."

It does not include:

- Residential dwelling units intended to be used as a residence
- Inpatient medical care facilities
- Licensed long-term care or social service facilities
- Detention or correctional facilities
- Private buildings or facilities that contain not more than five rooms for rent or hire and that are actually occupied by the proprietor as their residence

It DOES include **Housing at a Place of Education** (like a dorm or fraternity).

2

---

---

---

---

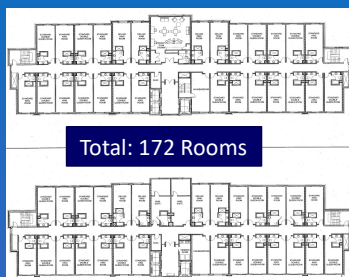
---

---

---

#### 224.1 New Construction

In **new construction**, the number of rooms required to be accessible is based upon the total number of guest rooms provided in the facility.



Floor 2  
27 Rooms

Floors 3-7  
145 rooms  
(29 / floor)

3

---

---

---

---

---

---

---

224.2 Rooms with Mobility Features

Guest rooms with mobility features complying with 806.2 shall be provided in accordance with Table 224.2.

Table 224.2 Guest Rooms with Mobility Features			
Total Number of Guest Rooms Provided	Minimum Number of Required Rooms Without Roll-In Showers	Minimum Number of Required Rooms With Roll-In Showers	Total Number of Required Rooms
1 to 25	1	0	1
26 to 50	2	0	2
51 to 75	3	1	4
76 to 100	4	1	5
101 to 150	5	2	7
151 to 200	6	2	8
201 to 300	7	3	10
301 to 400	8	4	12
401 to 500	9	4	13
501 to 1000	2 percent of total	1 percent of total	3 percent of total
1001 and over	20, plus 1 for each 100, or fraction thereof, over 1000	10, plus 1 for each 100, or fraction thereof, over 1000	30, plus 2 for each 100, or fraction thereof, over 1000

4

---

---

---

---

---

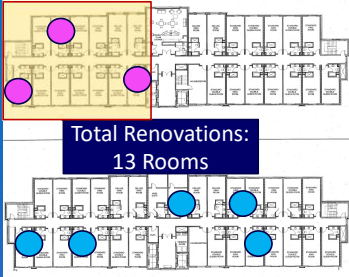
---

---

---

224.1.1 Alterations

In alterations, the minimum accessible guest rooms is based on the total number of rooms being altered or added to the facility (until the number of guest rooms in the facility complies with the minimum number required for new construction).



5

---

---

---

---

---

---

---

---

224.1.2 Guest Doors & Doorways

Remember:

Guest rooms that are **not required to provide mobility features** must still provide accessible entrances, doors, and doorways into and within the room. (They must comply with 404.2.3.)

*EXCEPTION: Shower and sauna doors in guest rooms that are not required to provide mobility features*

6

---

---

---

---

---

---

---

---

224.4 Communication Features

In transient lodging facilities, guest rooms with **communication features** complying with 806.3 shall be provided in accordance with Table 224.4.

Table 224.4 Guest Rooms with Communication Features

Total Number of Guest Rooms Provided	Minimum Number of Required Guest Rooms With Communication Features
2 to 25	2
26 to 50	4
51 to 75	7
76 to 100	9
101 to 150	12
151 to 200	14
201 to 300	17
301 to 400	20
401 to 500	22
501 to 1000	5 percent of total
1001 and over	50, plus 3 for each 100 over 1000

New Const. 172 rooms

7

---

---

---

---

---

---

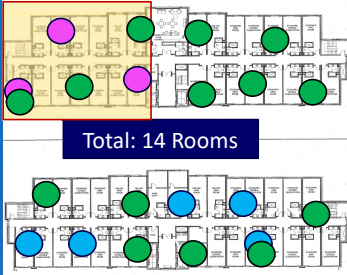
---

---

224.4 Communication Features

**At least one** guest room required to provide mobility features shall also provide communication features (224.5)

**Not more than 10 %** of guest rooms required to provide mobility features can be used to satisfy the minimum number of guest rooms required to provide communication features (224.5)



8

---

---

---

---

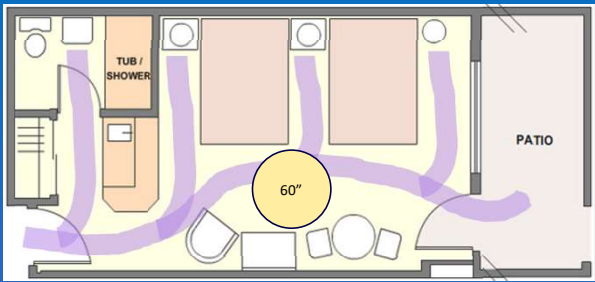
---

---

---

---

806 Rooms with Mobility Features



**ALL** rooms must have accessible doors

9

---

---

---

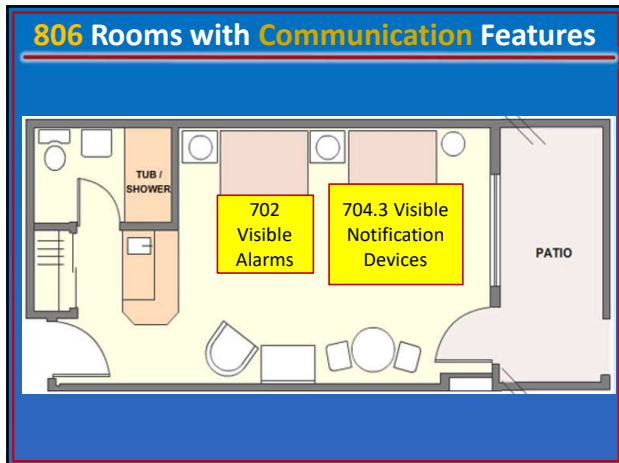
---

---

---

---

---



10

---

---

---

---

---

---

---

---



11

---

---

---

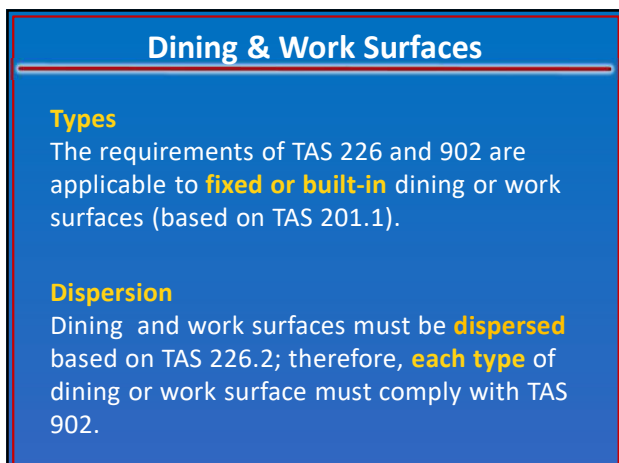
---

---

---

---

---



12

---

---

---

---

---

---

---

---

### 226.1 Dining Surfaces

Where dining surfaces are provided [...], **at least 5%** of the seating and standing spaces at the dining surfaces must comply with 902.



13

---

---

---

---

---

---

---

---

### 226 Dining and Work Surfaces

Where work surfaces are provided for use by other than employees, at least **5%** shall comply with 902.



14

---

---

---

---

---

---

---

---

### 226.1 & Advisory 902.1 Work Surfaces

Examples of work surfaces include, but are not limited to:

- Writing surfaces
- Study carrels
- Other tables or fixtures for personal grooming
- Coupon counters
- Baby changing tables



15

---

---

---

---

---

---

---

---

**902.1 Exception**

Dining surfaces and work surfaces for **children's use** shall be permitted to comply with 902.4.



16

---

---

---

---

---

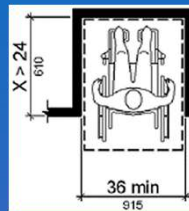
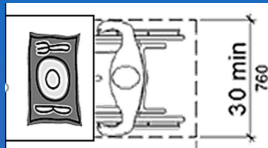
---

---

---

**TAS 902.2 Clear Floor/Ground Space**

Accessible dining surfaces shall be **30" minimum** in length based on 305.5 (or **36" minimum** if located in an alcove per TAS 305.7.1).



17

---

---

---

---

---

---

---

---

**226.1 How Many Seating Spaces & Standing Spaces**

**Remember:**

Where dining surfaces are provided for the consumption of food or drink, at least **5% of the seating spaces and standing spaces** at each type of dining surface shall comply with 902.



18

---

---

---

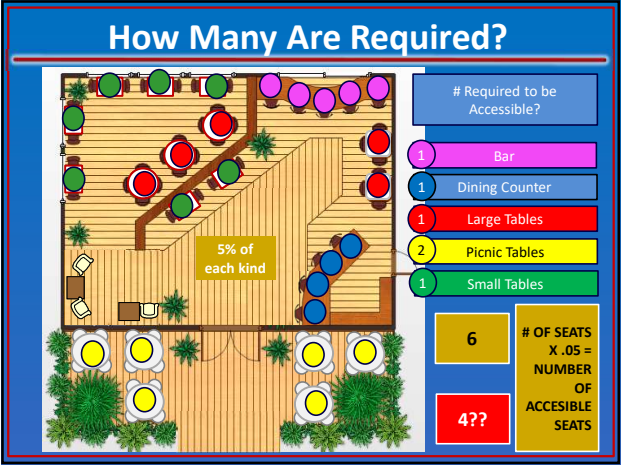
---

---

---

---

---



19

---

---

---

---

---

---

---

---

### Counters and Bars

There is not an option to provide table service in lieu of providing an accessible portion of counter at bars or other counters.

20

---

---

---

---

---

---

---

---

A measurement of 18" per person is used to calculate the number of seating and standing capacity of a dining surface.

The seat size is referenced TM 2013-14.

21

---

---

---

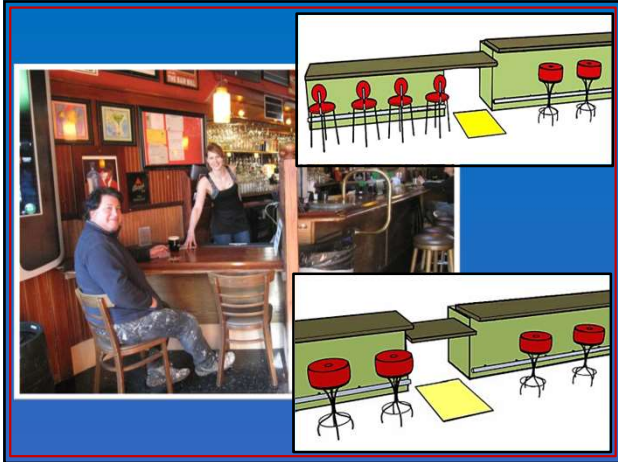
---

---

---

---

---



22

---

---

---

---

---

---

---

---



23

---

---

---

---

---


---

---

---

**227.2 Check-Out Aisles**

- Where check-out aisles serve different functions, check-out aisles complying with 904.3 shall be provided in accordance with **Table 227.2** for each function.
- Where counters are dispersed throughout the building or facility, counters complying with 904.4 also shall be **dispersed**.


 An illustration of two white 3D figures at a check-out counter. One figure is standing and handing a red bag to the other figure, who is seated behind the counter.

24

---

---

---

---

---

---

---

---





25

---

---

---

---

---

---

---

---

**904.3.1 Check Writing Surfaces**

Where provided, check writing surfaces shall be 28-34" max a.f.f. (902.3.)

A pull-out shelf is not acceptable.

The check writing surface is required to be accessible; not adaptable.

26

---

---

---

---

---

---

---

---

**227 Sales and Service Counters**

Sales counters and service counters shall comply with 904.4.1 or 904.4.2. The accessible portion of the counter top shall extend the same depth as the sales or service counter top.

US ACCESS BOARD ACCESSIBLE SALES AND SERVICE COUNTERS

27

---

---

---

---

---

---

---

---

### 227.4 Food Service Lines

Food service lines are **service counters** and must comply with 904.5.



28

---

---

---

---

---

---

---

---

### 904.5.1 Food Services

Self-service shelves and dispensing devices for tableware, dishware, condiments, food and beverages shall comply with 308 (reach ranges).



29

---

---

---

---

---

---

---

---

### 227.3 Sales & Service Counters

- Where provided, **at least one of each type** of sales counter and service counter must comply with 904.4.
- Where counters are dispersed throughout the building or facility, counters complying with 904.4 shall also be **dispersed**.



30

---

---

---

---

---

---

---

---

### Advisory 227.3 Counters

One continuous counter can be used to provide different services such as order and pick-up...



However... it would **not be acceptable** to provide access only to the part of the counter where orders are taken when orders are picked-up at a different location on the same counter.

***Both the order and pick-up section of the counter must be accessible.***



31

---

---

---

---

---

---

---

---

### 904.4 Service Counter

- Height: 36" high maximum
- Length: Based on approach:  
**Forward:** 30" long minimum  
**Parallel:** 36" long minimum

Where the provided counter surface is less than 36" long, the entire counter surface shall be 36" high maximum above the finish floor.

32

---

---

---

---

---

---

---

---

### Parallel Approach

The length of an accessible sales or service counter required for a parallel approach is **48" minimum**.

Where the provided counter surface is less than required, **the entire counter surface** must be accessible.



33

---

---

---

---

---

---

---

---

## 904.4 Sales & Service Counters

The accessible portion of the counter shall extend the **same depth** as the non accessible portion of the counter.



34

---

---

---

---

---

---

---

---

## Sales & Service Counters

Using folding or sliding shelves and other means of “*equivalent facilitation*” are not allowed except through a variance. **Using the end of the counter to hand items around is not allowed.**



35

---

---

---

---

---

---

---

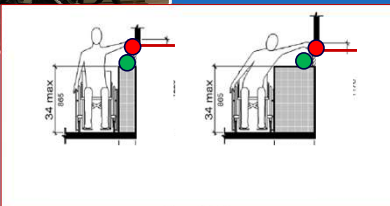
---

## Why not?

Transaction occurs here



Not full depth for full length



36

---

---

---

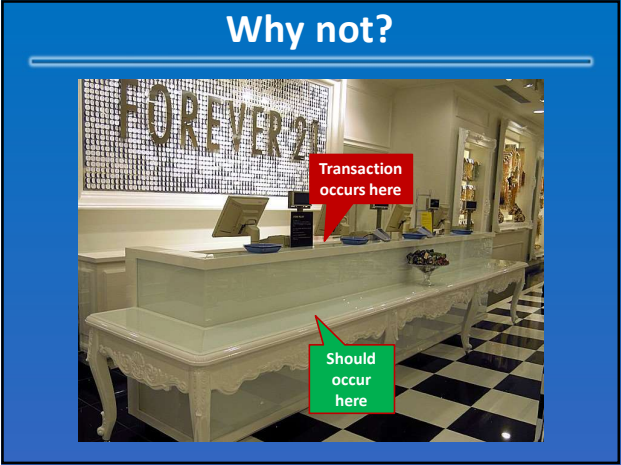
---

---

---

---

---



37

---

---

---

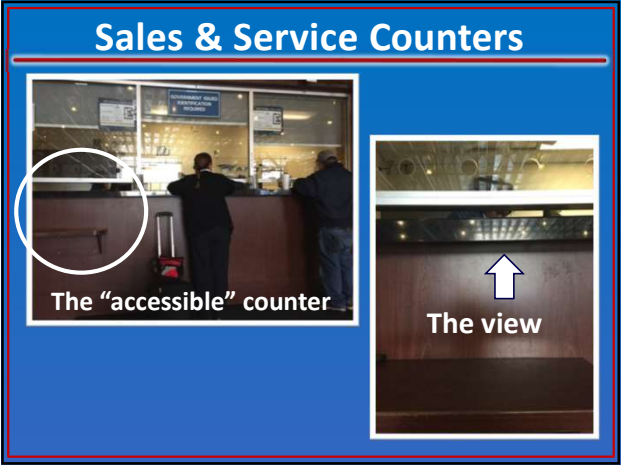
---

---

---

---

---



38

---

---

---

---

---

---

---

---



39

---

---

---

---

---

---

---

---

## Sales & Service Counters



40

---

---

---

---

---

---

---

---

## Fixed Seating (Benches)



42

---

---

---

---

---

---

---

---

## Excerpt from **TM 2013-11:**

Fixed or built-in benches and other types of fixed seating provided in **assembly areas** (as defined by TAS 106.5.10) shall comply with TAS 221 and **802**.



43

---

---

---

---

---

---

---

---



### 106.5.10 Assembly Area

#### Definition:

A building or facility, or portion thereof, used for the purpose of:

- Entertainment
- Educational or civic gatherings
- Similar purposes



Would you consider a seating area in a school library to be an assembly area?

44

---

---

---

---

---

---

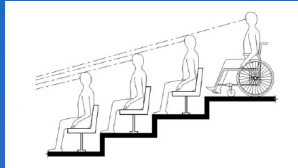
---

---

### 802 Assembly Area

Requirements for fixed seating and benches in Assembly Areas include standards for:

- Wheelchair spaces
- Companion Seats
- Designated Aisle Seats
- Viewing angles
- Line of sight



45

---

---

---

---

---

---

---

---

### Excerpt from TM 2013-11:

Compliance with **903** (Benches) is required only when specifically referenced in the 2012 TAS:

- Saunas and Steam Rooms (TAS 612.2)
- Dressing, Fitting, and Locker Rooms (TAS 803.4)
- Holding Cells and Housing Cells TAS (807.2.2)



46

---

---

---

---

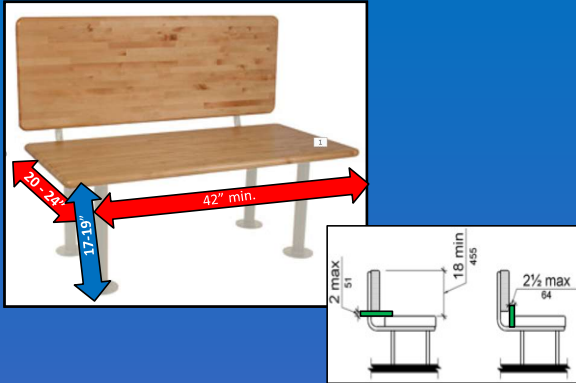
---

---

---

---

## 903 Benches



47

---

---

---

---

---

---

TM 2013-11



TM 2013-11 was issued in June 2013 to clarify where accessible benches are required.

48

---

---

---

---

---

---

## Compliant?



## Quick Quiz!

49

---

---

---

---

---

---



## But what if??

What if the benches were built into the reception area of vet clinic?



50

---

---

---

---

---

---

---

---

## BUT. WHAT. IF!?????

You have questions about...

- Implementing a particular standard
- How an exception or exemption works
- Why is the sky blue...wait, no
- ??? 202.4 Alteration Affecting Primary Function Areas
- Unisex toilet rooms
- Signage



51

---

---

---

---

---

---

---

---

## And what if...



...we were done?

52

---

---

---

---

---

---

---

---



Thank you for attending the  
Texas Accessibility Academy

---

---

---

---

---

---

---